



HWY 62 open studio
ART TOURS



WWW.HWY62ART.ORG

Two Weekends: OCTOBER 17-18 // 24-25

2015 // 14TH ANNUAL

Twentynine Palms, California

An Oasis of Murals & Public Art

At the North Entrance to Joshua Tree National Park

www.Visit29.org



Stay and Dine in 29!



Desert Hospitality ♦ Eclectic Dining ♦ Spiritual Renewal
 Art ♦ Music ♦ Theatre ♦ Cultural Events ♦ Star Gazing ♦ Drive-in Movies ♦ Casino



"In the Wilderness" Exhibition
 Visitor Center & Gallery
 73484 29 Palms Hwy. at Desert Queen
 Oct.-Dec. 2015 + www.Visit29.org



Joshua Tree National Park
 Art Exposition 2015
 Nov. 13-15 + Oasis of Mara, 29 Palms
www.JTNPArts.org



"Art Tours Collective Show"
 29 Palms Art Gallery
 74055 Cottonwood Dr. at National Park Dr.
 Oct. 2015 + www.29PalmsArtGallery.com

Table of Contents

WELCOME	4
HOW TO USE THIS CATALOG	6
INFORMATION CENTERS	7
A BRIEF HISTORY OF THE ART TOURS	8
FEATURE: TALES FROM THE TOUR	10
SPECIAL EVENTS	12
ART ALL YEAR	14
THANK YOU ART TOURS COMMITTEE	15
ARTIST STUDIO LISTINGS	
STUDIOS 1-49	16-28
STUDIOS 49-94	31-42
MAPS (DETACHABLE, FOLD-OUT)	29
INDEX OF ARTISTS	43
STUDIO DIRECTIONS	44
SUPPORTERS OF ART TOURS	47





Morongo Basin Cultural Arts Council
(MBCAC)

BOARD OF DIRECTORS

PAUL KLOPFENSTEIN
President

VALERIE DAVIS
Vice President

MARCIA GEIGER
Treasurer

LENNE ROSEN-KABE
Secretary

ALITA VANVLIET
Hwy 62 Art Tours Director

PAUL MOREHEAD
Marketing Director

PATRICIA KNIGHT
Membership Director

SCOTT DOTEN
Communications Director

ANNE BEATTIE
Member Events Director

MBCAC MISSION

The Morongo Basin Cultural Arts Council is a nonprofit organization created in 2001 by a dedicated and passionate group of local artists. Its mission is to inspire and enliven the community through the arts, and enhance the cultural and economic health of the region. Building community through the arts, the Arts Council continues to be a leading source of information, inspiration and energy for artists and patrons throughout the Morongo Basin and beyond.

Hwy 62 OPEN STUDIO ART TOURS AND THE MBCAC

The Hwy 62 Open Studio Art Tours is one way that the MBCAC shows commitment to the arts. We'd like to thank our Board of Directors along with the MBCAC Art Tours Planning Team, who wholeheartedly volunteer their time in support of this event.

www.mbcac.org
www.hwy62art.org

MESSAGE FROM THE PRESIDENT

Welcome to the 14th annual Highway 62 Open Studio Art Tours brought to you by the Morongo Basin Cultural Arts Council. The Council and the artists have been working all year to bring you this unique, two-weekend art experience. The high desert is a large and ecologically diverse environment with distinctive plants and animals, some which are only found in this area. As diverse as you will find the desert landscape and organisms, so you will find the artists, art, and the art studios inspired by the Mojave Desert. The many artists are individual in their choices of materials, vision, and methods.

In this catalog is all the information needed to find the art that appeals to you, how to get to the studios, and how to prepare for a safe and interesting desert driving experience. But don't give up with what is in your comfort zone. Explore this wonderful and unique world with art, artists, and the unusual beauty of the high desert of Southern California.

After your art experience, come back and visit one of the best national parks, Joshua Tree National Park, that is close to home. On other weekends you will find many galleries, museums, and small town festivals happening in the high desert.

I know that you will enjoy your adventure of art, new vistas and meeting the welcoming people of the Morongo Basin.

Paul Klopfenstein
President, Morongo Basin Cultural Arts Council

Welcome

TO THE 2015
HWY 62
OPEN STUDIO ART TOURS

MESSAGE FROM THE ART TOURS DIRECTOR

A few years back when I decided to simplify my life, make art my main focus, and move from the bustle of the Monterey Bay area to Joshua Tree, I was taking a risk. After all, I was leaving behind family and close friends, basically starting over. But, the communities adjacent to Joshua Tree National Park had a certain appeal from my very first visit in 2011 and I quickly began to feel the draw that so many others have undoubtedly felt before me. As an artist, discovering Joshua Tree National Park with its rugged skyline and wildly adaptive plant and animal life was just the inspiration I needed. Add to that a vibrant art community filled with warmhearted people expressing themselves in ways that have no boundaries – well, honestly, I knew this was the next place to call home.

I came to the area having participated for many years in open studio events in both small and large communities. Like others, the Hwy 62 Open Studio Art Tours represents a community of artists who on a yearly basis take this opportunity to share their work by opening up their creative spaces to the public. What I find unique about this tour and its artists is a sense of adventure, I believe in part due to the rugged environment so representative of the "wild west". What has amazed me about this tour is how broad and eclectic the talent is, one that easily rivals larger and more affluent communities. Of course the tours also bring out many of our local residents who enjoy visiting the studios year after year. But what is surprising is the number of visitors who come from places all over the globe like Germany and Denmark, England and Canada. From far and wide, appreciators of art are planning their trips to the area around this event. With a record number of artists in 2015 to choose from there is no shortage of opportunity for an art filled adventure, one that is bound to satisfy any and all artistic leanings.

Along with visiting the artist studios, I hope you will allow time to join in our special evening and month long tours events. From the Collective Show, on view the entire month of October, to live outdoor theater, you have many options to expand your tour experience. So let the art and unique high desert environment beckon you as it did me. Discover for yourselves the wide variety of artists whose expressive work makes this the wildly creative community that it is. Celebrate with us, be inspired, and be sure to take home some art!

P.S. Don't miss the article 'Tales from the Tours' by Arthur Comings featuring enlightening anecdotal quotes by several artists who speak of their experiences as Art Tours artists.

Alita VanVliet,
2015 Hwy 62 Open Studio Art Tours Director



HOW TO USE THIS CATALOG

First Weekend (West)
OCTOBER 17-18
9AM - 5PM

Second Weekend (East)
OCTOBER 24-25
9AM - 5PM

PACING YOURSELF

Although the Tour is held over two weekends, it's unlikely that anyone would be able to visit every studio listed in this catalog. There are 140 artists spread over several square miles -- who would want to rush their visit when they find an artist they really resonate with? Besides, in the beautiful high desert, getting there is part of the fun. So it will require some diligent planning to see all you wish to see.

MAKING THE MOST OF THE STUDIO LISTINGS

We suggest you begin with a review of our Artist Pages, where each artist is listed in order by their studio number. Once you've selected artists whose work appeals to you, refer to the catalog's maps to chart your course. Toward the end of the catalog you'll also find specific directions to each studio, written by the artists themselves. Once you're on your way, you'll undoubtedly see some Art Tours directional signs that may entice you to visit a studio or two that you hadn't anticipated.

Please note that Twentynine Palms Highway, 29 Palms Hwy and Hwy 62 are all the same road -- the names are used interchangeably. And remember that south is toward Joshua Tree National Park, while north is away from it. Whichever route you choose, we're sure your Art Tours experience will be a rewarding one.

STAYING SAFE

Don't attempt to drive through soft sand. If it's raining, avoid the washes -- flash floods can develop quickly. Cellphone service can be spotty, and please don't try to get to these studios using your GPS -- such directions have proven unreliable in this area. Bring layers of clothing, as warm days can turn to cool evenings in the high desert.



ART TOURS INFORMATION CENTERS

We want to give a special thank you to those locations in our area that offer their businesses to us as Hwy 62 Open Studio Art Tour Information Centers. These locations are key distribution centers for our catalogs and are there to support us before and during the Tour weekends.

MORONGO VALLEY:

Blue Agave Gallery & Cactus Mart
49889 Twenty-nine Palms Hwy
760-363-6070
www.cactusmart.net

PIONEERTOWN:

Mazamar Art Pottery
53626 Mane St.
760-228-0290
www.mazamar.com

YUCCA VALLEY:

Oasis Office Supply
56925 Yucca Trail
760-365-1773
www.oasisoffice.com

ArtFx & Furnishings
55836 Twenty-nine Palms Hwy
619-990-5683
YVDigital.com

California Welcome Center
56711 Twenty-nine Palms Hwy
760-365-5465

Rainbow Stew

55509 Twenty-nine Palms Hwy
760-418-5170
www.rainbowstew4u.com

JOSHUA TREE:

Gallery 62

61871 Twenty-nine Palms Hwy
gallery62@mbcac.org
www.hwy62art.org

Joshua Tree Art Gallery (JTAG)

61607 Twenty-nine Palms Hwy
310-562-0511
www.joshuatreeartgallery.com

TWENTYNINE PALMS:

29 Palms Gallery & Artist Guild
74055 Cottonwood Dr.
760-367-7819
www.29palmsgallery.com

29 Palms Creative Center & Gallery
6847 Adobe Rd
760-361-1805
www.29palmscreativecenter.com

29 Palms Visitor Center

73484 Twenty-nine Palms Hwy
760-367-6197
www.visit29.org

PALM SPRINGS:

Desert Art Center (DAC)

550 N. Palm Canyon Dr.
760-323-7973
www.desertartcenter.org

Palm Springs Visitor Center

2901 N. Palm Canyon Dr.
(760) 778-8418
www.visitpalmsprings.com

PALM DESERT:

Venus Studios Art Supply

41801 Corporate Way, Suite 7 & 8
Palm Desert, CA 92260
760-340-5085



A BRIEF HISTORY OF THE ART TOURS

Artists have always been intrigued by the high desert. Sometimes it inspires a whole community.

Back in 1994, the town of Twentynine Palms had an idea that would have lasting repercussions for the whole Morongo Basin: It decided to sponsor artists to paint murals on the walls of the town. The idea was to dress up the place and give the locals something to brag about. They produced one mural that first year and five the next; there are now over twenty.

One mural in that second batch was created by painter Chuck Caplinger, who had first come through town on his Harley heading for the Colorado River. There wasn't much happening in Joshua Tree at the time, says Chuck, but he liked the feel of Twentynine Palms, and he liked to paint murals. More than that, he could feel that the area

was ripe for an artistic renaissance.

In 2000, Chuck managed to attract an event called the Global Mural Conference to Twentynine Palms. The Conference was a success, and when the festivities were over, musician and producer Michael Callan called Chuck with an idea: Why not start an organization to promote the work of artists all over the Morongo Basin? Not just muralists, but actors and musicians and photographers and sculptors -- even painters. Since Chuck had been thinking along the same lines, they began rounding up like-minded friends and planning an arts festival.

As it happens, mixed-media artist Lucia Grossberger-Morales was putting together the area's first Open Studio Art Tours, focusing on the visual arts. Perhaps 20 artists opened their homes and studios to visitors for that first Tours in 2001,

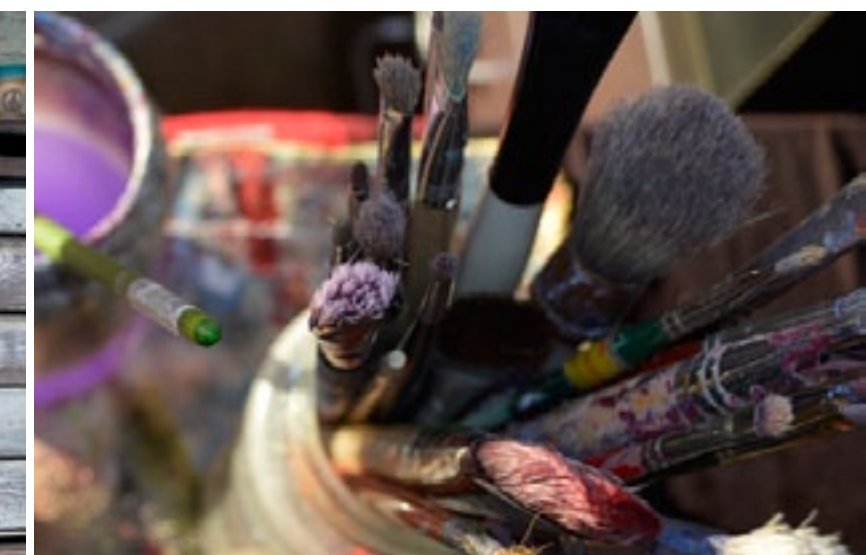
but the seed had been planted, and artists of many disciplines began to come together for a series of artists' gatherings.

Chuck and Michael and their friends, Owen and Audrey Gillick, Kit Brooks, Cathy Svelha, Linda Schrader, and Spelman Evans Downer, to name just a few, produced the first Morongo Basin Desert Arts Festival in 2002, to coincide with a variety of events already scheduled for the fall. By then they had incorporated as the non-profit Morongo Basin Cultural Arts Council, and were attracting both donors and increased public notice. Since then, many local artists and their supporters have continued the work of the MBCAC, guided by the founders' intention of providing opportunities for local artists to share their work and to enrich the community in which they live.

Chuck has sold the Harley, but he's still living in Twentynine Palms, and still painting, although murals are just part of his repertoire. Michael Callan is running Callan Communications. Spelman Evans Downer is teaching at Copper Mountain College, and Owen Gillick is still heavily involved in Basin activities. Some of the rest of their fellow visionaries are still around; some have moved on. But thanks to those early Art Tours pioneers, the idea that they fostered now attracts over 140 artists from Rimrock to Wonder Valley, Twentynine Palms to Morongo Valley, and all of the communities in between.

In the fall of each year these hardy souls come together once more to share their art -- and the desert that inspires it.

-- BY ARTHUR COMINGS



TALES FROM THE TOUR:

The Life of an Art Tour Artist

What's it like to be part of the Hwy 62 Art Tours? We talked with artists from across the Morongo Basin about how their lives and their art have been affected by this annual Basin-wide event. Some of our participants began showing on the Tours only a year or two ago; a few have been there since the beginning. Regardless, they all seem to appreciate this opportunity to open their studios for people who like to look at art.

A JOLT

Even though for some local artists the Tours is just one event in a steady procession of gallery openings, art festivals, and local fairs, most participants see it as one of their most important shows of the year. For Ellie Tyler (photography, collage) the Tours started out as "just another nice show to do, but now it's the highlight of my season. . . . it's enough of a jolt to carry me through the entire year."

Mark Doolittle (wood sculpture) agrees: "I didn't anticipate this kind of turnout -- the wide variety of visitors, and the numbers. It's going to be a major venue for us." Dan Romero (metal art) works mostly on commission; this is the only show he bothers with. "We sold art," he reports of his first year on the Tours, "and we met good people."

Ellen Hill (painting, Saami indigenous crafts) shows mostly in museums and galleries, and felt "quite reclusive -- disconnected from the local community." The Tours has helped her make contact not only with her visitors, but also with other local artists she might not have met otherwise. Raised on an Indian reservation, with family ties to Scandinavia, Hill has given visitors an insight into what's behind her work by playing Yoik music from the indigenous reindeer herders of Lapland.

FOLKS FROM AFAR

And the people come from everywhere. Ed Keesling (ceramics) has visitors "from all over -- mostly the Morongo Basin; I had two big carloads of people from Palm Springs last year. But also Colorado, Washington, Oregon, France, Germany, India . . ." Same for Esther Shaw (painting, mixed media), who sees people from "all over the Basin. Down below: Los Angeles and San Diego . . . But also Germany; Australia . . . you never know who's going to walk in -- people ride in on their bicycles!" Snake Jagger (assemblage, painting, mixed media) had Arnold Schwarzenegger's brother drop in -- but not on a bicycle. David McChesney (photography) is one of many artists who have noticed a growing trend: "People from everywhere are scheduling a trip to Joshua Tree to coincide with the Tours."

PREPARING FOR THE ONSLAUGHT

Being on the Tours involves more than hanging out in your studio for a couple of weekends in the fall. Many of our artists spend all year preparing their space for an onslaught of visitors -- and making sure they have plenty of work to show. Salvatore Sinare (drawing, painting, sculpture) always feels like "I'm not ready for it; I've got to get cranking . . . It's a mad rush the last month or so." Keesling's "pushing production as hard as I can." Bonnie Brady (painting, collage) acknowledges that "some people work 24 hours a day," but for her "there's no pressure; I'm always doing stuff."

Since Mark Heuston (metal art, sculpture) gives a metal-casting demonstration -- sometimes on two successive days -- he's got to "make the studio clean and safe" before visitors arrive. Regardless, he says, "There's nothing better than getting your visitors and clients into your studio." For Steve Rieman (metal sculpture), "there are always some chores: sweep out

the shop, put all the sharp tools away. But as the end of October approaches there's "no jamming; I just work right along."

OPENING THE DOORS

Opening up your studio can be a trial. Jagger has learned to handle "an unending flow of people . . . I do all I can to keep people entertained." Vera Topinka (photography, metal art) agrees: "I enjoy the people very much. But we were so busy, it was hard to have time to talk to people." She also found that she had no time to eat: "I made myself a sandwich, and at the end of the day there was one bite out of it." Topinka solved that problem the night before by putting together some bite-sized rolls of Swiss cheese, turkey and cucumber that she can devour in one bite before returning to her conversations. Visitors make do with cookies, fresh fruit, bottles of water, and other beverages.

Participants count on friends and family to lend a hand when the crowds get heavy. Nancy Miehle (oils, watercolors, stained glass) has sisters fly in from Homer, Alaska and Rice, Minnesota to help out. Since Rieman "never gets a chance to finish a conversation," he counts on two brothers-in-law who like people and help keep everyone happy. He's not surprised when he gets comments like, "We like your work -- but we love your brother-in-law!"

THE EXPOSURE

We asked our artists if participation in the Tours has affected their approach to their art. In general, people acknowledge that -- one way or another -- it has. For John Greenfield (ceramic sculpture) it's "extra motivation." Miehle feels that she benefits from the exposure: "I'm painting more, and entering more shows. People see an overall improvement in my work."

Many of our artists agree with Doolittle that "You don't make art for other people; you make it for yourself." At the same time, he says, "Now I really prepare; the first year it was just what was hanging around. And I'm offering lower-priced work."

Daniel Bartlett (photography) doesn't modify his work to please the crowds: "I show what I like, and I hope that others like it, too." But he finds his visitors to be "a really friendly bunch -- nice, polite, curious people," and he appreciates "so many people coming to my place and enjoying what I do."

Scott Doten (drawing, metal art, painting) who has done a lot of large-scale work on commission that visitors can't readily see, is now producing work "in a variety of sizes. I'm learning to scale my art to fit the Tours."

WHEN IT'S OVER

With the Tours behind them for another year, most artists feel like Perry Hoffman (ceramics, photography, assemblage): "I'm exhausted. Ready to collapse. Ready for a vacation." Jagger's mostly tired of the conversations: "All I want to do is lie down and not talk for a few days." Rieman agrees: "We're tired. We're happy we can close the studio." For a day or two, "we're asking ourselves, 'Are we going to do this again?'" -- but by Tuesday we're planning the next year."

As Gretchen Grunt (multi-media printmaker), observes, "The Tours always bring out really great people; they're so supportive." Shaw has noticed that these visitors contribute something she can't really provide: "Fresh eyes. Sometimes when you've been living with a piece, you miss stuff . . . you can be thinking that a piece isn't working, but then someone turns out to love it."

--BY ARTHUR COMINGS



SPECIAL EVENTS (see maps for this symbol)



COLLECTIVE ART SHOW 2015 HWY 62 OPEN STUDIO ART TOURS

OPENING RECEPTION
Oct. 2nd /// Friday /// 5-8pm

The Hwy 62 Open Studio Art Tours, presented by the Morongo Basin Cultural Arts Council has been a tradition since 2001. Each fall, a large number of the artists who live and work in the area open up their studios for the public to visit. In addition to the studio tour weekends of Oct. 17th - 18th & Oct. 24th - 25th an annual group, or "Collective Art Show" is held.

This year, the 29 Palms Art Gallery, a historic adobe located on the Oasis of Mara, in Twentynine Palms is the proud sponsor of the "Collective Art Show". The show will be up for the full month of October.

This art show is a special collection of art. Designed as a representational show for the annual Art Tours artists, you will be able to see a sampling of art on display, highlighting one piece from each artist on the tour. You may be surprised by how diverse the art in this area is. There will be works ranging from painters, sculptors, traditional realists, illustrators, abstractionists, conceptual artists, photographers, jewelers, ceramicists, textile artists and more.

So be sure to mark your calendars for the artist opening on Friday, October 2nd, 5:00 - 8:00pm. Enjoy a fantastic array of art while you mingle with the artists. The reception is free to the public and light refreshments will be served. All art on display at the "Collective Art Show" will be for sale.

LOCATION: 29 Palms Art Gallery
74055 Cottonwood Drive
Twentynine Palms, CA

ADMISSION: FREE

SHOW DATES: October 2nd - November 1st, 2015

OPENING: October 2nd /// 5-8pm



CHILI DINNER AT 29 PALMS ART GALLERY

Oct. 17th /// Saturday /// 5-8pm

A traditional Pioneer Days event, the meal choice will include both vegetarian and meat chili, along with cornbread, salads and dessert. The dinner will be served under the stars on the gallery's patio, accompanied by live music. A no-host bar opens at 4:30. In addition to the meal and music, the gallery will be open for viewing the Hwy 62 Open Studio Art Tours Collective Show.

LOCATION: 29 Palms Art Gallery
74055 Cottonwood Drive (off National Park Drive)
Twentynine Palms, CA

ADMISSION: \$13 Individual, \$25 Couple, \$8 Children under 10
Tickets available at the door

MORE INFO: 760.367.7819 /// www.29palmsartgallery.com

MOMENTS IN TIME UNDER A MANIC MOON

Oct. 17th & 18th /// Sat. & Sun. /// 8pm
Directed by Michael Eiden, written by Susan C. Hunter.

An avant-garde theatrical collage fusing the ever changing, ephemeral human mindscape with the eternal infinity of nature. Set against the canvas of the night sky, this outdoor performance piece will explore various inspired themes incorporating local history and using interactive and presentational techniques such as music, poetry, storytelling, improvisational and traditional theatre methods.

The audience will move with the story as it progresses through Clark Hunter's beautiful and naturally landscaped property on Mountain View Trail. Guests should bring folding chairs.

LOCATION: Residence and studio of Clark Hunter
55109 Mountain View Trail, Yucca Valley, CA
(Studio #11 on the Map)

ADMISSION: Free with light snacks, BYOB (bring your beverage)



Art All Year

MORONGO VALLEY:

Blue Agave Gallery & Cactus Mart
49889 29 Palms Hwy.
760-363-6076
www.cactusmart.net

Art Colony of Morongo Valley Gift Shop
Morongo Valley Community Center
11165 Vale Dr.
www.artcolonyofmorongovalley.com

YUCCA VALLEY:

ArtFx & Furnishings
55836 29 Palms Hwy.
619-990-5683
YVDigital.com

Plaza Art & Frame
57246 29 Palms Hwy.
760-365-3396

Rainbow Stew
55509 29 Palms Hwy.
760-418-5170
www.rainbowstew4u.com

Oasis Office Supply
56925 Yucca Trail
760-365-1773
www.oasisoffice.com

California Welcome Center
56711 29 Palms Hwy.
760-365-5465

JOSHUA TREE:

High Desert Cultural Center
61231 29 Palms Hwy.
760-366-3777
www.HiDesertCulturalCenter.org

Hi-Desert Medical Center
6601 Whitefeather Rd.

***Gallery 62**
61871 29 Palms Hwy.
exhibits@mbcac.org
www.mbcac.org

***Pie For The People**
61740 29 Palms Hwy.
760-366-0400
www.pieforthepeople.net

Joshua Tree Art Gallery JTAG
61607 29 Palms Hwy.
310-562-0511
www.joshuatreeartgallery.com

Natural Sisters Restaurant
61695 29 Palms Hwy.
760-366-3600

Grateful Desert Herb Shop
61695 29 Palms Hwy.
760-366-8333

Beatnik Lounge
61597 29 Palms Hwy.
www.rfjt.com
760-475-4680

***Office of County Supervisor Ramos**
Bob Burke County Building
63665 29 Palms Hwy.

***Joshua Tree San Bernardino County Library**
6465 Park Blvd.
760-366-8615

TWENTYNINE PALMS:

***29 Palms Inn**
3950 Inn Ave.
760-367-3505
www.29PalmsInn.com

29 Palms Gallery and Artist Guild
74055 Cottonwood Dr.
760-367-7819
www.29palmsgallery.com

29 Palms Visitor Center and Gallery
73484 29 Palms Hwy.
760-367-6197
www.visit29.org

***29 Palms Creative Center and Gallery**
6847 Adobe Rd.
760-361-1805
www.29palmscreativecenter.com

Raven's Book Shoppe
69225 29 Palms Hwy.
760-362-4900

Roadside Attraction
69197 29 Palms Hwy.
760-401-8038
www.douglasosmith.com

WONDER VALLEY:

The Glass Outhouse Gallery
77575 29 Palms Hwy.
760-367-3807

***Arts Council sponsored rotating art shows at this location**

These galleries and stores support the local art community by providing space for our artists to show and sell art work all year long. The list shown here is compiled from businesses who responded to the Arts Council's invitation for inclusion in this catalog and therefore may not be a complete representation.



Thank You!

2015 HWY 62 OPEN STUDIO ART TOURS COMMITTEE

ART TOURS OVERVIEW AND DIRECTORSHIP:

Alita VanVliet (Director), Kathi Klopfenstein (Assistant Director)

ARTIST REGISTRATION:

Kathi Klopfenstein, Patricia Knight, Marcia Geiger

COMMUNICATIONS TEAM:

Scott Doten, Alita VanVliet, Lenne Rosen-Kabe

CATALOG MANAGEMENT:

Alita VanVliet, Marcia Geiger, Tami Roleff, Paul Morehead, Scott Doten, Anne Beattie, Kathi Klopfenstein, Paul Klopfenstein, Ed Keesling, Arthur Comings, Patricia Knight

CATALOG GRAPHIC DESIGNER:

Melissa Sabol at Oasis Office Supply

ONLINE/MOBILE CATALOG:

Donna Eastman, Patricia Knight

CATALOG COVER IMAGE:

Paul Morehead, (photography), Marcia Geiger (staging). Special Thank You to Shelley & Forrest Dobson for the use of their property for the photo shoot.

CATALOG ARTIST PHOTO PREPARATION:

Paul Morehead, Patricia Knight, Alita VanVliet with special thanks to Dave Eckenberg

CATALOG MAPS:

Karyn Sernka, Marcia Geiger, Tami Roleff

CATALOG INK ILLUSTRATIONS:

Alita VanVliet

MARKETING & PROMOTIONS:

Paul Morehead, Valerie Davis, Rebecca Unger, Ed Keesling, Alita VanVliet

CATALOG DISBURSEMENT:

Alita VanVliet, Patricia Knight, Valerie Davis, Paul Klopfenstein, Kathi Klopfenstein, Ed Keesling

COLLECTIVE SHOW:

Ed Keesling, Heather Sprague with special thanks to the volunteers at 29 Palms Art Gallery

SPECIAL EVENTS:

Anne Beattie, Alita VanVliet, Rebecca Unger, Ed Keesling, Kathi Klopfenstein

ARTHUR COMINGS



The MBCAC board and Art Tours Planning Committee would like to express our heartfelt appreciation for the late Arthur Comings who passed away in July.

Arthur was a talented artist who created assemblage art. He was also a dedicated volunteer for the local art community who worked hard alongside us in the planning of this year's Art Tours. His contributions in writing and editing for the 2015 Art Tours catalog along with his work helping maintain the Art Council's website will not be forgotten. Thank you Arthur. You will be missed.

ARTIST Studios

STUDIOS OPEN 9AM - 5PM

MAP SYMBOLS:




 First Weekend

 Second Weekend

 Both Weekends



STUDIOS OPEN 9AM - 5PM

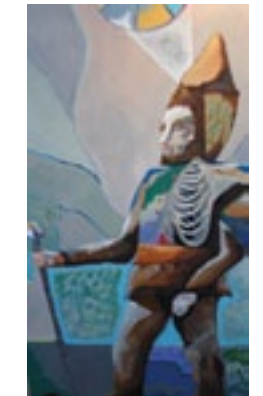
 First Weekend  Second Weekend  Both Weekends



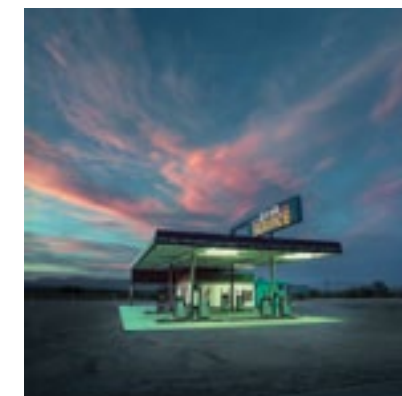
1 **SEBASTIANO GRASSO**
 First Weekend
 11398 Juniper Ave.
 Morongo Valley, CA 92256
<http://artedisesebastiano.smugmug.com>
 786-201-7681
Assemblage, Painting, 2D Mixed Media, 3D Mixed Media



2 **ROSA POULSEN FISHER**
 First Weekend
 49164 Hibiscus Dr.
 Morongo Valley, CA 92256
Painting



3 **JAMES HAGERTY**
 First Weekend
 49988 Aspen Dr.
 Morongo Valley, CA 92256
morongoman@gmail.com
<http://www.james-hagerty.com>
Painting, Sculpture



4 **BILL LEIGH BREWER**
 First Weekend
 9622 Coyote Tr.
 Morongo Valley, CA 92256
bill@billybrewer.com
<http://billybrewer.com>
 818-326-0006
Photography



5 **SHARON DAVIS**
EARTH HOUSE STUDIOS
 Both Weekends
 9102 Lanning Ln.
 Morongo Valley, CA 92256
Earthhousestudios@gmail.com
 703-508-7007
Mosaic, Painting, 3D Mixed Media



6 **SNAKE JAGGER**
SNAKE JAGGER STUDIO
 First Weekend
 52031 Breezeway
 Morongo Valley, CA 92256
snakejagger@gmail.com
www.snakejagger.com
 760-641-6342
Assemblage, Digital Art, Painting, Photography, Sculpture, 2D Mixed Media



7

DAN BARTLETT
DAN BARTLETT PHOTOGRAPHY
Both Weekends
8686 Little Morongo Rd.
Morongo Valley, CA 92256
danbartlett@ymail.com
www.danbartlettphotos.com
Assemblage, Photography



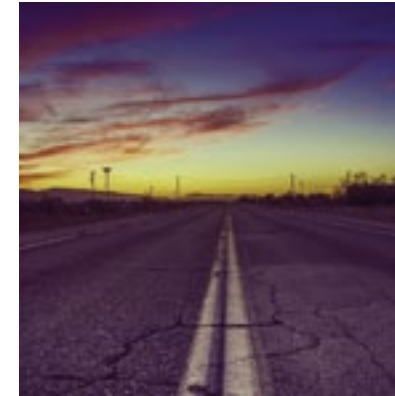
8

SUCCULENT SURPRISES
Second Weekend
8524 Little Morongo Rd.
Morongo Valley, CA 92256
succulent.surprises@gmail.com
succulentsurprises.com
909-362-2016
Ceramics, Succulents



9

ILONA MERCIER
ILONA MERCIER, INK
First Weekend
7454 Cardillo Tr.
Yucca Valley, CA 92284
https://www.facebook.com/ArtwithInkbyLona
760-218-1939
Painting



11

ANDREW EIDEN
First Weekend
55109 Mountain View Tr.
Yucca Valley, CA 92284
andreweiden@hotmail.com
562-230-5447
Photography



11

CLARK HUNTER
First Weekend
55109 Mountain View Tr.
Yucca Valley, CA 92284
werdoomed@aol.com
http://ClarkHunter.com
323-459-0603
Digital Art, Photography



11

MICHAEL EIDEN
First Weekend
55109 Mountain View Tr.
Yucca Valley, CA 92284
zenith8746@aol.com
oldmaninthedesert.com
562-477-1975
Jewelry



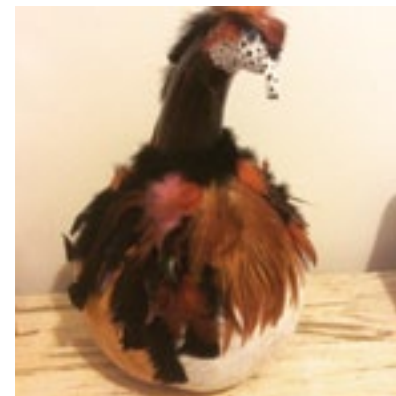
9

TAMI ROLEFF
First Weekend
7454 Cardillo Tr.
Yucca Valley, CA 92284
http://fineartamerica.com/profiles/tamiroleff.html
Photography



10

JAMES LUNA
JJ CREATIONS
Both Weekends
7933 Hammett Rd.
Yucca Valley, CA 92284
Jamesyv92284@gmail.com
760-660-1234
Metal Work, Woodwork, Other



10

JO ANN MARTINEZ
JJ CREATIONS
Both Weekends
7933 Hammett Rd.
Yucca Valley, CA 92284
jjcreations807@aol.com
562-383-3110
Gourd Art



12

CYNTHIA KING
First Weekend
55637 El Dorado Dr.
Yucca Valley, CA 92284
cindykingartist@gmail.com
www.ckingart.com
760-861-5879
Drawing, Encaustic, Painting



13

RAINBOW STEW
Both Weekends
55509 Twentynine Palms Hwy.
Yucca Valley, CA 92284
Rainbowstew4u@aol.com
www.rainbowstew4u.com
760-418-5170
Ceramics, Digital Art, Drawing, Gourd Art, Jewelry, Metal Work, Mosaic, Painting, Photography, Sculpture, Watercolor, Woodwork



14

CORY HAMILTON
CORY HAMILTON FURNITURE & DESIGN
First Weekend
8070 Palm Ave.
Yucca Valley, CA 92284
coryhamilton@verizon.net
www.coryhamilton.com
Furniture



15

BONNIE BRADY
First Weekend
56790 Desert Gold Dr.
Yucca Valley, CA 92284
bonniebrady@roadrunner.com
760-899-7779
Book arts, Painting, 2D Mixed Media



15

JOHN GREENFIELD
Both Weekends
56790 Desert Gold Dr.
Yucca Valley, CA 92284
greenfieldj27@yahoo.com
760-899-2230
Ceramics, Sculpture



15

SUSAN GONZALEZ
First Weekend
56790 Desert Gold Dr.
Yucca Valley, CA 92284
Assemblage



19

JOHN HENSON
First Weekend
5634 Roberts Rd.
Yucca Valley, CA 92284
sweetrockranch@gmail.com
www.johnhensondesertart.com
Assemblage, Sculpture, 3D Mixed Media



20

HOLLY RAE
CRYSTAL CORNERS JEWELRY
Both Weekends
4929 Canton St.
Yucca Valley, CA 92284
http://crystalcornersjewelry.com
Jewelry



20

VICTORIA ROTH LISBERG
Both Weekends
4929 Canton St.
Yucca Valley, CA 92284
Deerfoot1@msn.com
760-832-5611
Painting, Pastels



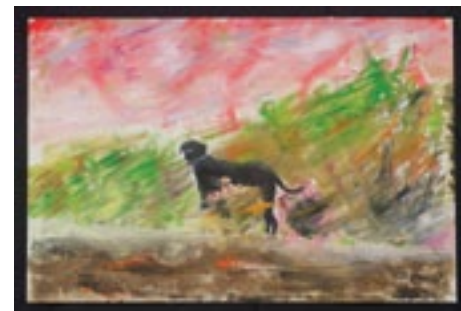
16

TOBI TABOADA
First Weekend
7638 Dumosa Ave.
Yucca Valley, CA 92284
tobitaboada@gmail.com
www.tobitaboada.com
760-228-2725
Book Arts, Encaustic, Paper Arts



17

MAE FOX
First Weekend
6929 Grand Ave.
Yucca Valley, CA 92284
760-228-1172
Glass, Painting



18

REUVEN WALLACK
Both Weekends
57523 Old Mill Rd.
Yucca Valley, CA 92284
reuvenwallack.com
Assemblage, Painting, 2D Mixed Media, 3D Mixed Media



21

JANELLEN FARMER
GHOST TOWN IMAGES
Both Weekends
56701 Chipmunk Tr.
Yucca Valley, CA 92284
janellenf@yahoo.com
760-228-0650
Photography



21

JO ANN PETERSEN
Both Weekends
56701 Chipmunk Tr.
Yucca Valley, CA 92284
760-365-0108
Painting



22

BILL DAHL
Both Weekends
5330 Grand Ave.
Yucca Valley, CA 92284
bdahl@billdahlphotography.com
http://www.billdahlphotography.com/
Photography



22

DEANE LOCKE
Both Weekends
5330 Grand Ave.
Yucca Valley, CA 92284
dlockefineart@verizon.net
dlockefineart.com
760-285-2318
Watercolor



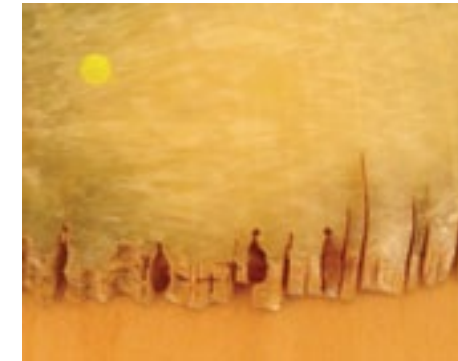
22

KATHI KLOPFENSTEIN
BEAR COURT BASKETS AND GOURDS
Both Weekends
5330 Grand Ave.
Yucca Valley, CA 92284
desklop92@verizon.net
http://bearcourt.com/
760-285-3898
Basketry



22

NICHOLE VIKDAL
Both Weekends
5330 Grand Ave.
Yucca Valley, CA 92284
nvikdal@roadrunner.com
www.facebook.com/kiln2perfection
Ceramics, Sculpture



24

RAY YEAGER
First Weekend
5563 Grand Ave.
Yucca Valley, CA 92284
ryeager890@aol.com
http://photomontage-rayyeagerart.com
Digital Art, Photography



25

SALVATORE SINARE
Both Weekends
56375 Cobalt Rd.
Yucca Valley, CA 92284
salsinare@earthlink.net
http://salvatoresinareart.com
760-365-2403
Drawing, Painting, 3D Mixed Media



26

CHRISTY ANDERSON
Both Weekends
53626 Mane St.
Pioneertown, CA 92268
privatearts@live.com
trailertags.com
760-250-1525
Assemblage, Metalwork, Sculpture



22

PAUL KLOPFENSTEIN
BEAR COURT BASKETS AND GOURDS
Both Weekends
5330 Grand Ave.
Yucca Valley, CA 92284
pklops@yahoo.com
http://bearcourt.com/
760-285-3799
Gourd Art, Metal Work



23

GEORGIA RYAN
WOODGATE STUDIO
Both Weekends
5405 Grand Ave.
Yucca Valley, CA 92284
jimandgeorgiaryan@frontiernet.net
http://www.woodgatestudio.com/
928-303-1292
Ceramics, Glass, Jewelry, Paper Arts



23

JULIANNE KOZA
Both Weekends
5405 Grand Ave.
Yucca Valley, CA 92284
juliannekoza@verizon.net
Jewelry, Photography



26

GEOFFREY FENNELL
Both Weekends
53626 Mane St.
Pioneertown, CA 92268
windsweeparts@hotmail.com
760-228-0290
Digital Art, Drawing, Jewelry, Painting, Photography, Watercolor



26

THOMAS AND AMARA ALBAN
MAZAMAR ART POTTERY
Both Weekends
53626 Mane St.
Pioneertown, CA 92268
AmaraAlban@gmail.com
MazAmar.com
760-228-0290
Ceramics



27

AUDREY GREEN
First Weekend
5462 Roy Rogers Rd.
Pioneertown, CA 92268
desertgreen9@me.com
760-228-0124
Assemblage, Painting, 3D Mixed Media



27

SUZEN SMALLWOOD
First Weekend
5462 Roy Rogers Rd.
Pioneertown, CA 92268
Jewelry, 3D Mixed Media



28

TONY MILICI
First Weekend
2808 Ox Yoke Pass
Pioneertown, CA 92268
toeknee@pacbell.net
760-369-8252
Assemblage, Ceramics, Painting, Photography



29

DAN ROMERO
ROMERO METAL SCULPTURE
First Weekend
2891 Tumbleweed Tr.
Pioneertown, CA 92268
Romerometal@gmail.com
<http://romerometal.com/index.html>
909-569-5077
Sculpture



31

CHRISTINE LAMB
EMBELLISHED LAMB
Both Weekends
8762 Alaba Ave.
Yucca Valley, CA 92284
lamb@embellishedlamb.com
www.embellishedlamb.com
760-401-2255
Jewelry, Painting, 3D Mixed Media



31

RAY LAMB
Both Weekends
8762 Alaba Ave.
Yucca Valley, CA 92284
ray@fineartlamb.com
www.fineartlamb.com
760-401-2254
Painting



32

HIROKO MOMII
Both Weekends
9252 Joshua Ln.
Yucca Valley, CA 92284
hiroko@hirokomomii.com
<http://hirokomomii.com>
760-820-1600
Painting



29

DEE SMALL
First Weekend
2891 Tumbleweed Trail
Pioneertown, CA 92268
deesmall3@hotmail.com
Painting, 2D Mixed Media, 3D Mixed Media



29

LARRY WHITE
VISTA PACIFIC STUDIOS
First Weekend
2891 Tumbleweed Trail
Pioneertown, CA 92268
laremail68@gmail.com
<http://larrywhiteartmix.com>
909-234-5337
Ceramics, Drawing, Metal Work, Painting, Sculpture



30

BARBARA BEHREND
Second Weekend
57840 Cortez Dr.
Yucca Valley, CA 92284
Behrendart@gmail.com
Painting



32

JENIFER PALMER-LACY
Both Weekends
9252 Joshua Ln.
Yucca Valley, CA 92284
Painting, Paper Arts, Watercolor



33

LARGER THAN LIFE MURALS
First Weekend
58217 Desert Gold Dr.
Yucca Valley, CA 92284
linda@largerthanlifemurals.com
<http://www.largerthanlifemurals.com>
760-413-2116
Painting, Photography



34

IAN FINDLEY
First Weekend
8311 Emerson Ave.
Yucca Valley, CA 92284
Painting, Watercolor



34

THOMAS WRIGHT
First Weekend
8311 Emerson Ave.
Yucca Valley, CA 92284
Painting



35

ESTHER SHAW
First Weekend
8289 Palomar Ave.
Yucca Valley, CA 92284
esthernmike2@gmail.com
<http://estershawsart.com>
760-369-9025
Painting, Pastel, Sculpture, Watercolor



36

SCOT MCKONE
OLD 'N WEST DESIGN
Both Weekends
7903 Palomar Ave.
Yucca Valley, CA 92284
semckone@verizon.net
760-567-7750
Furniture, Metal Work, Woodwork



40

VALERIE DAVIS
Both Weekends
5786 Marvin Dr.
Yucca Valley, CA 92284
valdavisartinjt@gmail.com
760-820-4336
Jewelry, Painting, Sculpture



41

ED KEESLING
CLAYWORKS
Both Weekends
58775 Wilmar Ave.
Yucca Valley, CA 92284
ededkeesling@aol.com
www.edscayworks.com
760-365-8193
Ceramics



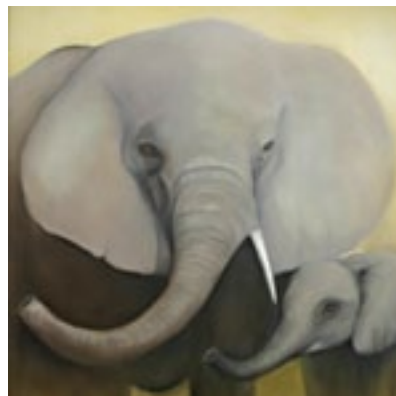
42

KAREN CAYGILL
CAYGILL CLAYTHINGS
Both Weekends
58979 Los Coyotes Dr.
Yucca Valley, CA 92284
dkcaygill@gmail.com
Ceramics



37

BARBARA SPILLER
Second Weekend
59388 Journey Lane
Joshua Tree, CA 92252
barbspiller@gmail.com
<http://barbaraspillerarts.com/home.html>
310-430-1380
Encaustic, Printmaking, 2D Mixed Media



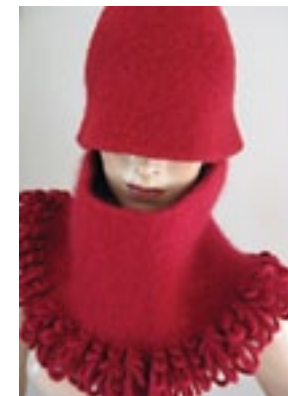
38

BARBARA WURDEN
BARBARA WURDEN ART AND DECORATIVE PAINTING
First Weekend
59489 Onaga Trail
Joshua Tree, CA 92252
Wurden@wurden.com
<http://wurden.com>
562-716-9079
Painting



38

STEFFI BALCIK
ZEN BUDDHA BUNNY
First Weekend
59489 Onaga Tr.
Joshua Tree, CA 92252
zenbuddhabunny@gmail.com
<http://zenbuddhabunny.com>
760-464-3630
Encaustic, Painting, Woodwork, 2D Mixed Media



43

ANDREA JUNGERT
DIVA KNIT WEAR
Both Weekends
58982 Los Coyotes Dr.
Yucca Valley, CA 92284
Andreajungert@icloud.com
<http://DivaKnitwear.com>
Fiber Arts/Textiles, Mosaic



43

BETH ABARAVICH
Both Weekends
58982 Los Coyotes Dr.
Yucca Valley, CA 92284
stylejunky@aol.com
<http://bethabaravich.squarespace.com>
213-272-2307
Fiber Arts/Textiles



44

PATRICK WEBSTER
First Weekend
59168 Forrest Dr.
Yucca Valley, CA 92284
art4bubba@yahoo.com
[Http://patrickwebsterart.com](http://patrickwebsterart.com)
760-288-5117
Drawing, Painting, 3D Mixed Media



45

Laurie Schafer
Ballerina with a Gun
Laurie Schafer Designs

First Weekend
59373 Sunway Dr.
Yucca Valley, CA 92284

laurieschaferdesigns@gmail.com
facebook.com/LaurieSchaferDesigns
651-503-0474

Drawing, Fiber Arts/Textiles, Painting



46

Bob Rowell
First Weekend
3768 El Dorado Ave.
Yucca Valley, CA 92284

Digital Art, Painting



46

Michael Fagan
First Weekend
3768 El Dorado Ave.
Yucca Valley, CA 92284

www.magiconthamesa.com
Ceramics, Photography



49

Tami Wood
Tami Wood Creations

First Weekend
1010 Cambria Ave.
Yucca Valley, CA 92284

tamiwoodcreations@gmail.com
tamiwoodcreations.com
760-774-2553

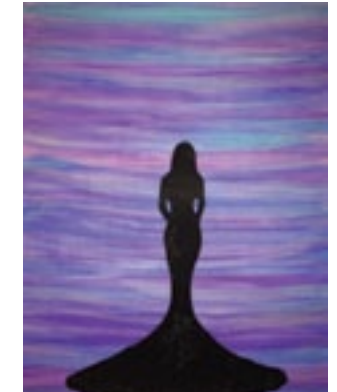
Assemblage, Painting, 2D Mixed Media



50

Bibiana Foschetti
Both Weekends
227 Cherokee Trl.
Yucca Valley, CA 92284

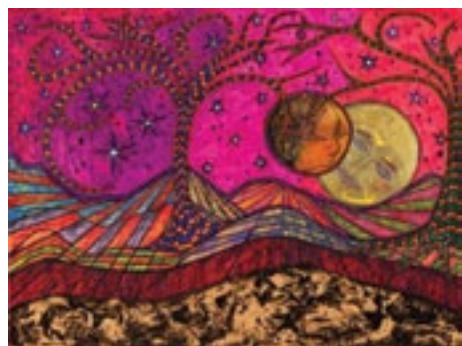
760-488-3367
Ceramics



50

Nicole Foschetti
Both Weekends
227 Cherokee Trl.
Yucca Valley, CA 92284

2D Mixed Media



47

James Hammons
First Weekend
3726 El Dorado
Yucca Valley, CA 92284

JamesHammonsArts@aol.com
http://JamesHammonsArts.com

Drawing, Painting, Watercolor



48

Steven L. Riemann
First Weekend
1188 Tahoe Ave.
Yucca Valley, CA 92284

riemans@riemansculpture.com
www.riemansculpture.com
760-364-3455

Sculpture



49

Shelly Fredenburg
From My Hands to Yours

First Weekend
1010 Cambria Ave.
Yucca Valley, CA 92284

shellrswift@hotmail.com
760-660-3698

Ceramics, Metal Work, Photography



51

Kathy Zyduck
Moonlight Arts

Both Weekends
56446 Jesse Rd.
Landers, CA 92285

moonlightartslc@gmail.com
www.facebook.com/MoonlightArts
760-660-9970

Furniture, Jewelry, Painting



52

Moira Fain
Second Weekend
58125 Jack Rabbit Rd.
Landers, CA 92285

moirafain.com
Sculpture



53

Tina Bluefield
First Weekend
60756 Birdie Rd.
Landers, CA 92285

tbluefield@mail.com
http://tinabluefield.com
760-364-4310

Assemblage, Painting, Printmaking



54

GEORGIA TONEY

First Weekend
919 Shangri La
Joshua Tree, CA 92252

georgiawrites@gmail.com
http://veraphotography.com/
Photography



54

PATRICIA KNIGHT

Second Weekend
919 Shangri la
Joshua Tree, CA 92252

info@patriciaknightphotography.com
http://patriciaknightphotography.com
760-218-9714
Photography



54

**SCOTT DOTEN
FINE ART AND DESIGN**

Both Weekends
919 Shangri La Ln.
Joshua Tree, CA 92252

Scottinjt@gmail.com
https://www.facebook.com/scottdoten
760-333-5216
*Metalwork, Painting, Sculpture,
Watercolor*

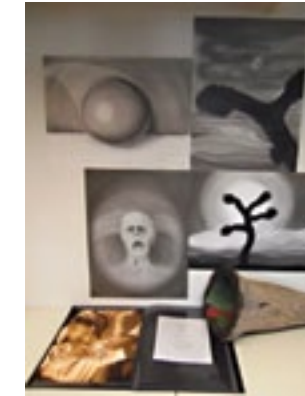


55

ISMAEL JESSIE RODRIGUEZ

Both Weekends
2575 Manana Ave.
Joshua Tree, CA 92252

ijrodez@hotmail.com
760-218-4406
Painting, Sculpture



55

MICHAEL MONDRY

Both Weekends
2575 Manana Ave.
Joshua Tree, CA 92252

mondrymichael@yahoo.com
760-363-2100
Drawing, Painting, Sculpture



55

TARA HARVEST MURPHY

Both Weekends
2575 Manana Ave.
Joshua Tree, CA 92252

Drawing, Painting

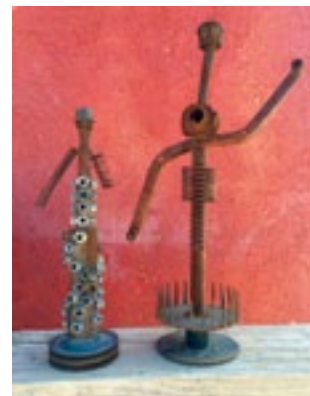


54

THEANN HAYES

Second Weekend
919 Shangri La Lane
Joshua Tree, CA 92252

theannh@yahoo.com
760-401-2727
Photography



55

COLE BANAS

Both Weekends
2575 Manana Ave.
Joshua Tree, CA 92252

760-218-4406
Assemblage, Metalwork, Sculpture



55

**ERIC BANAS
LA BONETTO STUDIOS**

Both Weekends
2575 Manana Ave.
Joshua Tree, CA 92252

me@labonetto.com
http://www.labonetto.com/
760-218-4406
Metalwork, Painting, Woodwork



56

DOUG DOLDE

Second Weekend
60726 Sunny Sands Dr.
Joshua Tree, CA 92252

dougdolde@gmail.com
www.douglasdolde.com
760-913-0588
Photography

57

**LINDA FERRARI
FERRARI ART STUDIO**

First Weekend
3292 Sunset Rd.
Joshua Tree, CA 92252

lindaFerrari13@yahoo.com
760-821-5772
Ceramics, Painting



58

BARBARA DRUCKER

Second Weekend
2950 Rice Rd.
Joshua Tree, CA 92252

www.barbaradrucker.net
Painting



59

**NOAH PURIFOY
NOAH PURIFOY FOUNDATION**

Both Weekends
63030 Blair Ln.
Joshua Tree, CA 92252

<http://noahpurifoy.com/>

*Assemblage Sculpture, Construction,
Installation*



60

BRUCE HEARN

Both Weekends
63425 Kelly Circle
Joshua Tree, CA 92252

Assemblage, Jewelry, Beadwork



60

**CYNTHIA COX
WHITEFEATHER STUDIO**

Both Weekends
63425 Kelly Cr.
Joshua Tree, CA 92252

jcc@whitefeatherstudio.com
<http://whitefeatherstudio.com>
760-821-5955

Jewelry, Sculpture



64

LORETTE EISBRENNER

Both Weekends
5957 Sunset Rd.
Joshua Tree, CA 92252

leisbrenner99@gmail.com
562-923-8264

Jewelry



64

**LOUISE MARLER
LA MARLER**

Both Weekends
5957 Sunset Rd.
Joshua Tree, CA 92252

lamarler@mac.com
www.LAMarler.com
310-204-0452

*Digital Art, Drawing, Paper Arts,
Photography, Printmaking, 2D Mixed
Media*



65

TAYLOR JUNCTION

Both Weekends
61732 29 Palms Hwy.
Joshua Tree, CA 92252

[https://www.facebook.com/
TaylorJunction](https://www.facebook.com/TaylorJunction)

Ceramics, Painting, Other



61

**RIC & TIM VIGALLON
VIGALL-ART**

Both Weekends
63227 Golden St.
Joshua Tree, CA 92252

vigallart@msn.com
<http://vigall-art.com>
760-366-8152

Metal Work



62

**PAUL MOREHEAD
PAUL MOREHEAD
PHOTOGRAPHY**

Both Weekends
61026 El Coyote
Joshua Tree, CA 92252

paul@paulmorehead.com
<http://www.paulmorehead.com/>
760-364-4567

Digital Art, Photography



63

JAMES O'KEEFE

Both Weekends
5401 Border Ave.
Joshua Tree, CA 92252

artokeefe12@yahoo.com
<http://jamesokeefeart.com>
760-401-6385

Painting



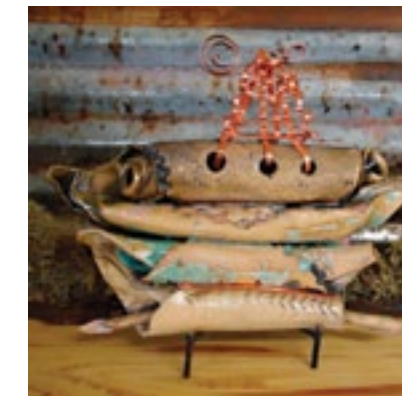
66

**DEBORAH AMMAR
HEART OF THE MATTER**

Second Weekend
63434 Broadway St.
Joshua Tree, CA 92252

714-745-8905

Assemblage, Ceramics



66

**KARAN MURPHY
LA CASA DE ARTE STUDIO**

Both Weekends
63434 Broadway
Joshua Tree, CA 92252

karanmurphy@yahoo.com

Ceramics, Painting, 3D Mixed Media



67

**HEATHER SPRAGUE
FEY LITTLEWING PHOTOGRAPHY**

Both Weekends
61745 El Reposo Circle
Joshua Tree, CA 92252

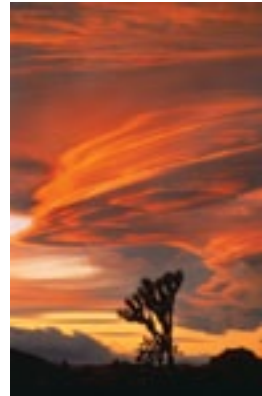
feylittlewingphotography@gmail.com
[www.etsy.com/shop/
FeyLittleWingPhoto](http://www.etsy.com/shop/FeyLittleWingPhoto)

Digital Art, Photography, Other



67

MARYA FIELDS
Both Weekends
61745 El Reposo Circle
Joshua Tree, CA 92252
Mesquitehill@msn.com
760-364-3309
Jewelry



67

SAM ROBERTS
SAM ROBERTS PHOTOGRAPHY
Both Weekends
61745 El Reposo Circle
Joshua Tree, CA 92252
sam@srobertsphoto.com
www.srobertsphoto.com
Photography



68

MICHELLE WILLEY
Both Weekends
6753 Sunset Road
Joshua Tree, CA 92252
mlwphotography@verizon.net
http://MLWphotography.net
760-285-0226
Photography



70

RICHARD SOUTHARD
IMPRESSIONS IN WOOD
First Weekend
60615 La Mirada Tr.
Joshua Tree, CA 92252
dandssouthard@gmail.com
Rsouthard.com
763-218-5586
Sculpture



71

BECKY HUFFMAN
DESERT ROADRUNNERS
Both Weekends
61306 Sandalwood Dr.
Joshua Tree, CA 92252
desert_roadrunners@yahoo.com
760-403-1707
Photography



71

HUGH HUFFMAN
DESERT ROADRUNNERS
Both Weekends
61306 Sandalwood Dr.
Joshua Tree, CA 92252
909-723-7318
Painting



69

LENNE ROSEN-KABE
First Weekend
7880 Wesley Rd.
Joshua Tree, CA 92252
rosenkabe@gmail.com
www.lennerosenkabe.com
310-528-0198
Painting



69

SIRI CHEW
First Weekend
7880 Wesley Rd.
Joshua Tree, CA 92252
sirichew@gmail.com
http://irisejewelrydesign.etsy.com
Jewelry



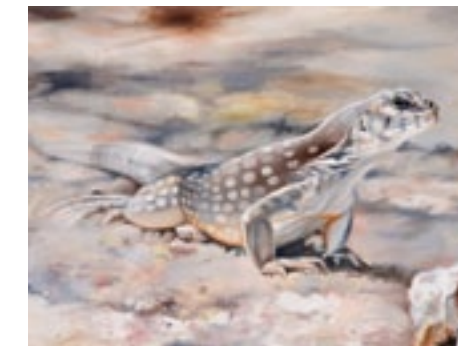
69

STEVE POKRAS
IRONVILLE
First Weekend
7880 Wesley Rd.
Joshua Tree, CA 92252
ironville2014@gmail.com
www.chinocanyonbuilders.com
Metal Work, Sculpture



72

ALITA VANVLIET
ALITA VANVLIET FINE ART AND DESIGN
First Weekend
7236 Saddleback Rd.
Joshua Tree, CA 92252
alita@alitanvanvietart.com
www.alitanvanvietart.com
831-332-0984
Painting, Illustration, Jewelry



73

KARINE SWENSON
Both Weekends
6925 Juniper Rd.
Joshua Tree, CA 92252
karine@karineswenson.com
www.karineswenson.com
760-449-0094
Drawing, Encaustic, Painting, Watercolor, 2D Mixed Media



75

ELLIE TYLER
EARTH IMAGE PHOTOGRAPHY
Both Weekends
6785 Saddleback Rd.
Joshua Tree, CA 92252
ellietylerphoto@gmail.com
http://www.ellietyler.com/
760-366-8019
Photography, 2D Mixed Media, 3D Mixed Media



75

JEFF TURNER
Both Weekends
6785 Saddleback Rd.
Joshua Tree, CA 92252
artworks3d.com
Sculpture, Drawing, Painting



75

SHERRY KILLAM
SHERRY KILLAM FINE ART
Both Weekends
6785 Saddleback Rd.
Joshua Tree, CA 92252
skillam@earthlink.net
<http://sherry-killam.artistwebsites.com>
760-464-9534
Painting, Photography



76

REBECCA JANES
Second Weekend
8277 Fleur Dr.
Joshua Tree, CA 92252
<http://cvisionaryart.com>
Drawing, Painting, Photography



79

SIMI DABAH
Both Weekends
5255 Sunfair Rd.
Joshua Tree, CA 92252
juliedabah@icloud.com
www.simidabahsculptures.com
310-200-4233
Metalwork, sculpture



80

MARK DOOLITTLE
MARK DOOLITTLE STUDIO
Both Weekends
7284 Mt. Shasta Ave.
Joshua Tree, CA 92252
markdool@ucla.edu
<http://www.markdoolittlestudio.com>
661-433-5546
Sculpture



81

LILI TANNER
LILI T.
Both Weekends
6905 Petersen Road
Twentynine Palms, CA 92277
lilitcali@gmail.com
<http://lilitcalifornia.com>
310-508-0538
Jewelry, Leather bags



77

DAVID JESSE MCCHESENEY
Both Weekends
8385 Fleur Dr.
Joshua Tree, CA 92252
setitup@earthlink.net
<http://MilesOfWonder.com/>
760-366-8601
Photography, Books, Notecards



77

VERA TOPINKA
Both Weekends
8385 Fleur Dr.
Joshua Tree, CA 92252
veraphotography.com
760-366-1030
Assemblage, Metal Work, Photography



78

ELLEN HILL
Both Weekends
62677 Quail Springs Rd.
Joshua Tree, CA 92252
ehill@tseka.com
<http://www.tseka.com/>
760-366-9237
Jewelry, Painting, Watercolor, 2D Mixed Media, 3D Mixed Media



82

DOUGLAS OLIVER SMITH
Second Weekend
69197 29 Palms Hwy.
Twentynine Palms, CA 92277
douglas.o.smith@gmail.com
<http://www.douglasosmith.com/>
760-401-8038
Drawing, Painting, Sculpture, 2D Mixed Media, 3D Mixed Media



83

PATTY O'TOOLE
RAVEN COVE POTTERY
Second Weekend
69225 29 Palms Hwy.
Twentynine Palms, CA 92277
858-829-8250
Ceramics, Sculpture



84

ART MORTIMER
Both Weekends
70141 Arenoso Tr.
Twentynine Palms, CA 92277
artmortimer@earthlink.net
www.artmortimer.com
760-865-0704
Painting, Photography



84

GILLYAN THORBURN
Both Weekends
70141 Arenoso Trail
Twentynine Palms, CA 92277
gillyan@earthlink.net
760-865-0704
Fiber Arts/Textiles, Jewelry



85

PHILIP SMART
Second Weekend
6675 Split Rock Avenue
Twentynine Palms, CA 92277
Drawing, Painting, Sculpture, Other



86

DOUG WHITFIELD
Both Weekends
6847 Adobe Road
Twentynine Palms, CA 92277
easyas123zz@gmail.com
<http://29PalmsCreativeCenter.com/stainedglass.html>
760-361-1805
Glass



87

TERI BEDILION
STAINED GLASS BY TERI
Second Weekend
73738 Foothill Dr.
Twentynine Palms, CA 92277
t.bedilion@verizon.net
714-815-2013
Glass



88

MARK SPANGENBERG
MARK J SPANGENBERG FINE ART
Second Weekend
74351 Cottonwood Dr.
Twentynine Palms, CA 92277
www.markspangenbergfineart.com
Drawing, Painting, 2D Mixed Media



89

AARON SCOTT
COYOTE TOWN CREATIONS
Both Weekends
73792 Playa Vista Dr.
Twentynine Palms, CA 92277
apscott1216@yahoo.com
Facebook: Coyote Creations and Aaron Scott's 29 Palms
760-401-5044
Mosaic, Sculpture, 3D Mixed Media



86

GRETCHEN GRUNT
Both Weekends
6847 Adobe Rd.
Twentynine Palms, CA 92277
29PalmsCreativeCenter@gmail.com
<http://29PalmsCreativeCenter.com>
Book Arts, Ceramics, Drawing, Encaustic, Mosaic, Painting, Printmaking, Sculpture, 2D Mixed Media, 3D Mixed Media



86

PARIS BIRDWELL
GLASS OASIS
Both Weekends
6847 Adobe Rd.
Twentynine Palms, CA 92277
www.parisbirdwell.com
808-268-6731
Glass



87

MICHAEL BEDILION
BEDILION PHOTOGRAPHY
Second Weekend
73738 Foothill Dr.
Twentynine Palms, CA 92277
m.bedilion@verizon.net
mbedilionphoto.com
714-815-2013
Photography



90

JANET BRALEY
Both Weekends
74656 Taylor Ln.
Twentynine Palms, CA 92277
mudbath2@gmail.com
760-367-3892
Ceramics



91

JAYMIE ARQUILEVICH
FINCHLEY STITCHES
Second Weekend
79414 Ward Ln.
Wonder Valley, CA 92277
jarquilevich@roadrunner.com
<http://etsy.com/shop/finchleystitches>
805-798-3901
Fiber/Textile Arts, Painting



92

ROBERT ARNETT
Both Weekends
6340 Allen Ave.
Wonder Valley, CA 92277
bobarnett91741@yahoo.com
<http://robertarnettfineart.com>
626-488-5827
Painting

STUDIOS OPEN 9AM - 5PM



First Weekend



Second Weekend



Both Weekends



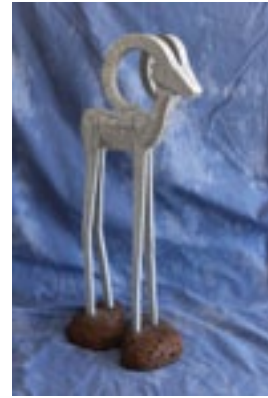
93

PERRY HOFFMAN

Both Weekends
79188 El Paseo Rd.
Twentynine Palms, CA 92277

magentaraven@gmail.com
http://magentaraven.com
805-452-4898

Ceramics, Mosaic, Photography



94

MARK HEUSTON

Second Weekend
83230 Garden Ave.
Wonder Valley, CA 92277

solarmouse@dslexreme.com
760-596 - 9210

Metal Work, Sculpture



Artist Index

BY LAST NAME

NAME	STUDIO	WEEKEND	PAGE	NAME	STUDIO	WEEKEND	PAGE	NAME	STUDIO	WEEKEND	PAGE
Abaravich, Beth	43	Both	27	Grunt, Gretchen	86	Both	40	Rae, Holly	20	Both	21
Alban, Thomas and Amara	26	Both	23	Hagerty, James	3	1st	17	Rainbow Stew	13	Both	19
Ammar, Deborah	66	2nd	35	Hamilton, Cory	14	1st	19	Rieman, Steven L.	48	1st	28
Anderson, Christy	26	Both	23	Hammons, James	47	1st	28	Roberts, Sam	67	Both	36
Arnett, Robert	92	Both	41	Hayes, Theann	54	2nd	32	Rodriguez, Ismael Jessie	55	Both	33
Arquilevich, Jaymie	91	2nd	41	Hearn, Bruce	60	Both	34	Roleff, Tami	9	1st	18
Balcik, Steffi	38	1st	26	Henson, John	19	1st	21	Romero, Dan	29	1st	24
Banas, Cole	55	Both	32	Heuston, Mark	94	2nd	42	Rosen-Kabe, Lenne	69	1st	36
Banas, Eric	55	Both	32	Hill, Ellen	78	Both	38	Rothlisberg, Victoria	20	Both	21
Bartlett, Dan	7	Both	18	Hoffman, Perry	93	Both	42	Rowell, Bob	46	1st	28
Bedilion, Michael	87	2nd	40	Huffman, Becky	71	Both	37	Ryan, Georgia	23	Both	22
Bedilion, Teri	87	2nd	41	Huffman, Hugh	71	Both	37	Schafer, Laurie	45	1st	28
Behrend, Barbara	30	2nd	24	Hunter, Clark	11	1st	19	Scott, Aaron	89	Both	41
Birdwell, Paris	86	Both	40	Jagger, Snake	6	1st	17	Shaw, Esther	35	1st	26
Bluefield, Tina	53	1st	31	Janes, Rebecca	76	2nd	38	Sinare, Salvatore	25	Both	23
Brady, Bonnie	15	1st	20	Jungert, Andrea	43	Both	27	Small, Dee	29	1st	24
Brale, Janet	90	Both	41	Keesling, Ed	41	Both	27	Smallwood, Suzen	27	1st	24
Brewer, Bill Leigh	4	1st	17	Killam, Sherry	75	Both	38	Smart, Philip	85	2nd	40
Caygill, Karen	42	Both	27	King, Cynthia	12	1st	19	Smith, Douglas Oliver	82	2nd	39
Chew, Siri	69	1st	36	Klopfenstein, Kathi	22	Both	22	Southard, Richard	70	1st	37
Cox, Cynthia	60	Both	34	Klopfenstein, Paul	22	Both	22	Spangenberg, Mark	88	2nd	41
Dabah, Simi	79	Both	39	Knight, Patricia	54	2nd	32	Spiller, Barbara	37	2nd	26
Dahl, Bill	22	Both	21	Koza, Julianne	23	Both	22	Sprague, Heather	67	Both	35
Davis, Sharon	5	Both	17	Lamb, Christine	31	Both	25	Succulent Surprises	8	2nd	18
Davis, Valerie	40	Both	27	Lamb, Ray	31	Both	25	Swenson, Karine	73	Both	37
Dolde, Doug	56	2nd	33	Larger Than Life Murals	33	1st	25	Taboada, Tobi	16	1st	20
Doolittle, Mark	80	Both	39	Locke, Deane	22	Both	22	Tanner, Lili	81	Both	39
Doten, Scott	54	Both	32	Luna, James	10	Both	18	Taylor Junction	65	Both	35
Drucker, Barbara	58	2nd	33	Marler, Louise	64	Both	35	Thorburn, Gillyan	84	Both	40
Eiden, Andrew	11	1st	19	Martinez, Jo Ann	10	Both	18	Toney, Georgia	54	1st	32
Eiden, Michael	11	1st	19	McChesney, David Jesse	77	Both	38	Topinka, Vera	77	Both	38
Eisbrenner, Lorette	64	Both	35	Mckone, Scot	36	Both	26	Turner, Jeff	75	Both	38
Fagan, Michael	46	1st	28	Mercier, Ilona	9	1st	18	Tyler, Ellie	75	Both	37
Fain, Moira	52	2nd	31	Milici, Tony	28	1st	24	VanVliet, Alita	72	1st	37
Farmer, Janellen	21	Both	21	Momii, Hiroko	32	Both	25	Vigallon, Ric & Tim	61	Both	34
Fennell, Geoffrey	26	Both	23	Mondry, Michael	55	Both	33	Vikdal, Nichole	22	Both	22
Ferrari, Linda	57	1st	33	Morehead, Paul	62	Both	34	Wallack, Reuven	18	Both	20
Fields, Marya	67	Both	36	Mortimer, Art	84	Both	39	Webster, Patrick	44	1st	27
Findley, Ian	34	1st	25	Murphy, Karan	66	Both	35	White, Larry	29	1st	24
Foschetti, Bibiana	50	Both	31	Murphy, Tara Harvest	55	Both	33	Whitfield, Doug	86	Both	40
Foschetti, Nicole	50	Both	31	O'Keefe, James	63	Both	34	Wiley, Michelle	68	Both	36
Fox, Mae	17	1st	20	O'Toole, Patty	83	2nd	39	Wood, Tami	49	1st	31
Fredenburg, Shelly	49	1st	28	Palmer-Lacy, Jenifer	32	Both	25	Wright, Thomas	34	1st	26
Gonzalez, Susan	15	1st	20	Petersen, Jo Ann	21	Both	21	Wurden, Barbara	38	1st	26
Grasso, Sebastiano	1	1st	17	Pokras, Steve	69	1st	36	Yeager, Ray	24	1st	23
Green, Audrey	27	1st	23	Poulsen Fisher, Rosa	2	1st	17	Zyduck, Kathy	51	Both	31
Greenfield, John	15	Both	20	Purifoy, Noah	59	2nd	34				

Directions

A **43 Abaravich, Beth** From Hwy 62 turn north on to Yucca Mesa Rd, turn left on Wilmar, then right on Linda Lee Dr. House is on the right-hand corner of Linda Lee and Los Coyotes Dr.

26 Alban, Thomas and Amara From Hwy 62, turn north on to Pioneertown Road. Drive 4 miles to Pioneertown until you see Pioneer Bowl on the right. Park next to Pioneer Bowl and walk across the dirt road, which is Mane St, to 53626. Look for the sign that says ‘Pottery’ on our building.

66 Ammar, Deborah From Hwy 62, turn north on Sunfair, go about 2 miles to Broadway St, turn left. About 2 miles. On corner of Broadway and Rice (end of paved road), on right side of the road.

26 Anderson, Christy From Hwy 62, turn north on to Pioneertown Rd. Drive 4 miles to Pioneertown until you see Pioneer Bowl on the right. Park next to Pioneer Bowl and walk across the dirt road, which is Mane Street, to 53626. Look for the sign that says ‘Pottery’ on the building.

92 Arnett, Robert From Hwy 62, travel 6.5 miles east from the city of 29 Palms, turn left on to Allen Ave just east of airport, 2nd house on the left.

91 Arquilevich, Jaymie From Hwy 62, turn north on to Godwin Rd. Take Godwin to Amboy Rd. Cross Amboy and continue on dirt road (also Godwin). Turn east onto Ward Ln (first right) to 79414, the first house on the left. Enter driveway between wooden posts.

B **38 Balcik, Steffi** From Hwy 62, turn south onto La Contenta. Pavement ends, continue on gravel road. Corner of La Contenta and Onaga Trail.

55 Banas, Cole From Hwy 62, turn north on to Sunburst, turn right on Golden, turn left on Border, turn left on La Brisa for appx 1/2 mile and turn left on Manana. Studio is on the left.

55 Banas, Eric From Hwy 62, turn north on to Sunburst, turn right on Golden, turn left on Border, turn left on La Brisa for appx 1/2 mile and turn left on Manana. Studio is on the left.

7 Bartlett, Dan From Hwy 62, turn north on to Little Morongo Rd, then left on Breeze Wy, then right on T Circle. The studio is the 1st house on the left. From Palm Springs/L.A. : Take 62 East to Rose Eden and turn left then left again on Breeze Wy. then right on T Circle. The studio is the 1st house on the left.

87 Bedilion, Michael From Hwy 62 turn south on to Adobe Rd, drive .75 miles. Left on Foothill Dr, to first house on left.

87 Bedilion, Teri From Hwy 62 turn south on to Adobe Rd, drive .75 miles. Left on Foothill Dr, to first house on left.

30 Behrend, Barbara From Hwy 62 turn south on to Joshua Ln, turn right on Warren Vista, turn left on San Andreas Rd, take second street on to Dulce Ave, first right is 57840 Cortez Dr at Knob Hill Ranch. Exhibition is in guest house.

86 Birdwell, Paris From Hwy 62 turn south on to Adobe Rd. The 29 Palms Creative Center is on the left a few blocks down across from hardware store.

53 Bluefield, Tina From Hwy 62 in Yucca Valley turn north on Old Woman Springs Road. Go about 8 miles. Turn right onto Reche Toad. Go about 5 miles. Turn right onto Bowman Trail. Turn left onto Birdie. Studio is on the left. From Hwy 62 in Joshua Tree, turn north onto Sunburst. Turn right onto Golden. Turn left on Border. Turn left on Winters. Turn right on Via Maria. Turn left on Birdie. Studio is on the left. Do not use GPS!

15 Brady, Bonnie From Hwy 62 turn south on to Sage Ave. Proceed through 2 stop signs. Continue 4 blocks, turn right (west) on Desert Gold to 56790.

90 Braley, Janet From Hwy 62 turn north on to Utah Tr. Drive approximately 3 miles on Utah Trail through three stop signs, continue on to the dirt road 9/10 of a mile to the studio on the hill.

4 Brewer, Bill Leigh From Hwy 62, turn north on Big Morongo Canyon Road. Go 9/10 of a mile. Turn right on Coyote Trail. We are the first driveway on the left.

C **42 Caygill, Karen** From Hwy. 62, turn north on to Yucca Mesa, left on Wilmar, right on Linda Lee (first right after Paradise View), house is on the corner of Linda Lee and Los Coyotes.

69 Chew, Siri From Hwy 62, turn south on to La Contenta Rd, turn left on Yucca Trail/Alta Loma, turn right on Olympic Rd, turn left on Onaga Tr, turn right on to Wesley Rd. House/studio will be on the right.

60 Cox, Cynthia From Hwy 62 turn north on to Sunburst, right on Golden, left on Border, appx 1/2 mile to Belmont, right on Belmont for 1 mile follow the signs to Kelly Circle to the right. Do not go uphill on Belmont.

D **79 Dabah, Simi** From Hwy 62 turn north on to Sunfair Rd. Drive appx. 1 mile to 4th St.

22 Dahl, Bill From Hwy 62, turn north onto Old Woman Springs Rd/247, drive to first light (Buena Vista/Skyline). Left on to Skyline Ranch Rd, left onto Wallaby, turn right onto Grand Ave, arrive at 5330 Grand.

5 Davis, Sharon From Hwy 62 turn north on to Lanning Ln. Arrive at last house on left. Lanning Ln is a dirt road that runs along the right side of the County Market Liquor store parking lot.

40 Davis, Valerie From Hwy 62 turn north on Yucca Mesa Rd, 1 mile. Turn left on to Douglas (3rd no passing sign). Turn left on Marvin Dr. Arrive at third house on the right.

56 Dolde, Doug From Hwy 62, turn north on to Yucca Mesa Rd. Turn right on Aberdeen, drive appx 2 miles. Turn left on Wesley Rd (it’s marked on the south side by a white diamond on a post), drive appx 1/2 mile to Sunny Sands. Turn right on to Sunny Sands Dr. Arrive at third house on the left.

80 Doolittle, Mark From Hwy 62, turn south on to Mt. Shasta Ave. Proceed to the end of Mt. Shasta Ave; studio is the last house on the right.

54 Doten, Scott From Hwy 62, turn north on to Sunburst Ave. Turn right on Golden. Turn left on Border. Drive appx 4 miles then turn left on to Winters Rd (dirt). Go 1.4 miles to large metal building at 919 Shangri La Lane. Entrance off Winters.

58 Drucker, Barbara From Hwy 62 turn north on to Sunburst for 3 miles; right on Golden; left on Border for 1 mile; right on Aberdeen for 1/2 mile; left on Center (unpaved road) for 2 blocks; right on Cielito for 1/2 mile; left on Rice Rd. House/studio is burnt orange color on left side of unpaved road.

E **11 Eiden, Andrew** From Highway 62, turn south on to Kickapoo Trail, turn right on Mountain View Tr, look for sign that says “Hunter” and turn left on to long driveway up to house. Appx 2 min from Hwy 62.

11 Eiden, Michael From Highway 62, turn south on to Kickapoo Trail, turn right on Mountain View Tr, look for sign that says “Hunter” and turn left on to long driveway up to house. Appx 2 min from Hwy 62.

64 Eisbrenner, Lorette From Hwy 62 turn north on to Sunset Rd. Go about 1/2 mile up to the top of the hill to the last house on the right, just before Hilltop Rd.

F **46 Fagan, Michael** From Hwy 62, turn north on to Yucca Mesa Rd, turn left on Aberdeen, turn left on El Dorado. Arrive at house appx 3/4 mile.

52 Fain, Moira From Hwy 62 turn north on to Old Woman Springs Rd / Hwy247. Turn right on to Reche Rd. Turn left on Landers Lane. Turn left on Jack Rabbit Rd. Turn left at the first driveway.

21 Farmer, Janellen From Hwy 62, turn north on Old Woman Springs Rd (Hwy 247). Turn left on Skyline Ranch Rd. Turn left at the second street, Grand Ave. Go to stop sign and turn right on Chipmunk Trail. First or second driveway on the left.

26 Fennell, Geoffrey From Hwy 62 turn north on Pioneertown Rd. (Yucca Valley) and follow up to the Pioneer Bowl in Pioneertown just past Pappy & Harriets. Park at the bowling alley parking lot and walk across Mane St, you’ll see “POTTERY” sign in large letters across top of building.

57 Ferrari, Linda From Hwy 62 turn north on to Yucca Mesa Rd. Turn right (east) on to Aberdeen Dr. Studio is on the NW corner of Aberdeen and Sunset Rd.

67 Fields, Marya From Hwy 62 turn south at the traffic signal on Park Blvd. Proceed for 2 blocks. Turn right on to El Reposo Circle. Go to the second driveway on the left.

34 Findley, Ian From Hwy 62, turn south on Joshua Lane, travel 3.1 Miles then turn left on Emerson Ave. Destination is on right side at the corner of Emerson Ave and Carlyle Drive. Entrance to the Gallery/Studio will be on the Carlyle side.

50 Foschetti, Bibiana From Hwy 62 turn north on to CA-247 N/Old Woman Springs Road. Drive 9.5 miles, then turn left on to Napa Street. Drive 0.2 miles then take the first left on to Cherokee Trail. Destination will be on the left.

50 Foschetti, Nicole From Hwy 62 turn north on to CA-247 N/Old Woman Springs Road. Drive 9.5 miles, then turn left on to Napa Street. Drive 0.2 miles then take the first left on to Cherokee Trail. Destination will be on the left.

17 Fox, Mae From Hwy 62 turn north on to Grand Ave. Proceed 3 blocks. Look for the fence on the right with animals on it.

49 Fredenburg, Shelly From Hwy 62 turn north on to CA-247 N/Old Woman Springs Road 8 miles. Turn right on Starlight Mesa. Left on Cambria Ave. Go to the last house on the left.

G **15 Gonzalez, Susan** From Hwy 62 turn south on to Sage Ave. Proceed through 2 stop signs. Continue 4 blocks, turn right (west) on Desert Gold to 56790.

1 Grasso, Sebastiano From Hwy 62 turn north at the stop light on to Senelis Ave. Go 100 feet. Turn left on Senelis again at stop sign (“T” Intersection). Go 1 mile. Turn left on to Juniper Ave at stop sign (“T” Intersection). Third home on right.

27 Green, Audrey From Hwy 62 turn north on Pioneertown Rd. Continue past Pappy and Harriets a few streets. Turn left on Roy Rogers Rd. 5th house on right side. 5462 Roy Rogers Rd.

15 Greenfield, John From Hwy 62 turn south on Sage Ave. (Denny’s at corner) and proceed south past 2 stop signs. Continue 4 blocks and turn right (west) at Desert Gold to 56790.

86 Grunt, Gretchen From Hwy 62 turn south (Denny’s near corner) on to Adobe Rd towards mountains, located 3 blocks south on the east side of the street in the orange building directly across the street from Builder’s Supply.

H **3 Hagerty, James** From Hwy 62 turn north on to Valley View Rd. Go about a mile and turn left on to Aspen Dr. Studio is on the right side about a mile down the road.

14 Hamilton, Cory From Hwy 62 turn south on to Palm Ave. (Where Autozone is.) Turn left on to Onaga Trl. Make an immediate right onto Palm Ave. Studio is almost to the top of the street on the right hand side.

47 Hammons, James From Hwy 62, turn north on to Yucca Mesa Road, turn left on Aberdeen, turn left on El Dorado, 3/4 mile to address.

54 Hayes, Theann From Hwy 62, turn north on to Sunburst Ave. Turn right on Golden. Turn left on Border. Go about 4 miles then turn Left on Winters Rd. (dirt). Go 1.4 miles to large metal building at 919 Shangri La Lane. Entrance off Winters.

60 Hearn, Bruce From Hwy 62 turn north on Sunburst Ave. Turn right on to Golden. Turn left on Border. Proceed 1/2 mile. Turn right on Belmont. Proceed 1 mile. Follow the signs on the right. Do not go up hill.

19 Henson, John From Hwy 62, turn north on Old Woman Springs Rd / SR 247 to Hillcrest. Turn right on Hillcrest and continue until it ends at Roberts Road. Turn right on Roberts Road. The studio is at the end of the road.

94 Heuston, Mark From Hwy 62 turn north on to Godwin Rd. Right on Amboy Rd and head east again about five miles to Shadow Mountain Rd; it’s just past the Palms Restaurant. Turn left on Shadow Mountain Rd and go about 1 & 1/4 miles; look for the Open Studio sign on your left.

78 Hill, Ellen From Highway 62 turn south on Park Blvd. Travel 3.1 miles. (Park Blvd turns into Quail Springs Rd) Driveway will be on the right side.

93 Hoffman, Perry On Hwy 62, head east from Circle K in 29 Palms, going appx. 7 miles. Turn left on Godwin (after the airport.) Turn left on El Paseo Rd. The Tile House studio is the first house on the right side of El Paseo Rd.

71 Huffman, Becky From Hwy 62 turn south on Sunny Vista Dr. Turn right on Alta Loma Dr. Turn left on to Sunny Vista Dr. Turn left on Sandalwood Dr. Cross Outpost Rd. to first house on left.

71 Huffman, Hugh From Hwy 62 turn south on Sunny Vista Dr. Turn right on to Alta Loma Dr. Turn left on to Sunny Vista Dr. Turn left on Sandalwood Dr. Cross Outpost Rd. to first house on left.

11 Hunter, Clark From Hwy 62 turn south on Kickapoo Trl. Turn right on Mountain View Trl. About a 1/8 mile turn left at the address and follow the dirt road to the studio.

J **6 Jagger, Snake** From Hwy 62 turn north on Desert Willow. Drive up the road about 1/4 mile until you get to Breezeway. Turn left on Breezeway. House is second from the corner.

76 Jones, Rebecca From Hwy 62 turn south on to Sunset Rd. Take Sunset until you come to the Joshua Tree Highlands sign. Turn left on Skyline Dr. In one block turn right onto Fleur Dr. The studio is the left third house.

43 Jungert, Andrea From Hwy 62 turn north on to Yucca Mesa Rd. Turn left on Wilmar Ave. Turn right on Linda Lee Dr. Turn left on Los Coyotes Drive. First driveway on the right side.

K **41 Keesling, Ed** From Hwy 62 turn north on to Yucca Mesa Rd. Drive 1 mile to Douglas Lane. Turn left on Douglas Ln. Turn right on Indio Ave. Drive 1 block. Turn left on Wilmar Ave. Drive 1 block to Red House with white trim at the end of the road. The studio and parking are at the end of the driveway behind the house.

75 Killam, Sherry From Hwy 62 turn south on Saddleback Road. Continue for 3/10 of a mile. Second house on left.

12 King, Cynthia From Hwy 62 turn south on Acoma Trl. Turn right on Desert Gold Dr. Turn left on Elk Trail for a bit, then turn right back onto Desert Gold Dr. Turn left onto Free Gold, then right on El Dorado Dr. Studio is up the drive in the second house on the left.

22 Klopfenstein, Kathi From Hwy 62, turn north on to Old Woman Springs Rd./247, follow to first light (Buena Vista/Skyline). Turn left on Skyline Ranch Rd. Turn left onto Wallaby St. Turn right on to Grand Ave. Look for 5330.

22 Klopfenstein, Paul From Hwy 62, turn north on to Old Woman Springs Rd./247, follow to first light (Buena Vista/Skyline). Turn left on Skyline Ranch Rd. Turn left onto Wallaby St. Turn right on to Grand Ave. Look for 5330.

54 Knight, Patricia From Hwy 62 turn north on Sunburst Ave. Turn right on Golden St. Turn left on Border Ave. Turn left on Winters Rd, Continue 1.4 miles to large metal building (Studio Shangri-La) entrance on Winters Rd.

23 Koza, Julianne From Hwy 62, turn north on to Old Woman Springs Rd./247, follow to first light (Buena Vista/Skyline). Turn left on Skyline Ranch Rd. Turn left onto Wallaby St. Turn right on to Grand Ave. Studio is first house on the right, has long cement driveway.

L **31 Lamb, Christine** From Hwy 62 turn south on Joshua Lane for 2.6 miles. Turn right on San Vicente Dr. Continue 3 blocks. Turn left on Juarez Dr. Turn right on Alaba Ave. House is at the end of the cul-de-sac.

31 Lamb, Ray From Hwy 62 turn south on Joshua Lane for 2.6 miles. Turn right on San Vicente Dr. Continue 3 blocks. Turn left on Juarez Dr. Turn right on Alaba Ave. House is at the end of the cul-de-sac.

33 Larger Than Life Murals, From Hwy 62, head south on Avalon Ave, which turns into Palomar after crossing Yucca Tr. Continue south on Palomar, then turn right on Desert Gold Drive. Go almost to the end of the block; house is on the left.

22 Locke, Deane From Hwy 62, turn north on to Old Woman Springs Rd/247. Follow to first stop light (Buena Vista/Skyline Ranch Rd). Left on Skyline Ranch Rd, left onto Wallaby, turn right on to Grand. Look for 5330 Grand.

10 Luna, James From Hwy 62, turn south on Kickapoo, turn right on Mountain View. Go right to Hammett, corner of Hammett and Mountain View.

M **64 Marler, Louise** From Hwy 62, turn north on Sunset Rd. Go about 1/2 mile up to the top of the hill and it’s the last house on the right, just before Hilltop Rd.

10 Martinez, Jo Ann From Hwy 62, turn south on Kickapoo, turn right on Mountain View. Go right to Hammett, corner of Hammett and Mountain View.

77 McChesney, David Jesse From Hwy 62, turn south on Sunset Rd. Turn right at Alta Loma, then make an immediate left to stay south on Sunset Rd. Turn left at Skyline Dr, then right on Fleur Dr. House/studio is on the left, after Rincon Rd, at 8385 Fleur Dr.

36 Mckone, Scot From Hwy 62, head south on Avalon Ave for about 1 mile to Yucca Tr. At Yucca Tr, Avalon changes to Palomar Ave. Continue south on Palomar about 1 mile to 7903 Palomar on left.

9 Mercier, Ilona From Hwy 62, turn north on to Camino del Cielo (Travel Lodge). Take the first left on Martinez. Then the second right on to Cardillo. Southeast corner of Cardillo Tr and San Remo Tr. Enter through gate at the mailbox.

28 Milici, Tony From Hwy 62, turn north on to Pioneertown Rd until it turns into Rimrock Rd. Continue on Rimrock Rd, turn left on Burns Canyon (approximately 4.5 miles past Pioneertown), right on to Ox Yoke Pass.

32 Momi, Hiroko From Hwy 62, at the signal of Old Woman Springs Rd (247), turn south, on to Joshua Lane toward Black Rock Campground. Drive 4 miles. 9252 Joshua Lane is on the right. Proceed to the drive way, then park on the circle.

55 Mondry, Michael From Hwy 62, head north on Sunburst, turn right on Golden, turn left on Border, turn left on La Brisa, go approximately 1/2 mile and turn left on Manana. Studio is on the left, 2575 Manana Ave.

62 Morehead, Paul From Hwy 62, turn north on Sunburst Ave, turn left on Calle Los Amigos (at the new elementary school). Turn right on Wren Rd, (at the end of the pavement), turn left on El Coyote (last house on right at top of hill just before red cabin).

84 Mortimer, Art From Hwy 62, turn south on Sherman Rd in Twentynine Palms. Entering Sherman Highlands, go to top and turn right on Arenoso Trail. Third house on the left. Park on the street or in the driveway. Studio is in the back, behind the house.

66 Murphy, Karan From Hwy 62, turn north on Sunfair, go about 2 miles to Broadway St, turn left. About 2 miles. On corner of Broadway and Rice (end of paved road), on right side of the road.

55 Murphy, Tara Harvest From Hwy 62, head north on Sunburst, turn right on Golden, turn left on Border, turn left on La Brisa. Go approximately 1/2 mile and turn left on Manana. Studio is on the left, 2575 Manana Ave.

O **63 O’Keefe, James** From Hwy 62, turn north on Sunburst in Joshua Tree. Drive 1 mile to Crestview and turn right. Go to the end of Crestview; pavement ends, take a left, you are now on Border Ave. Go 1/2 mile to 5401 Border on your right. Just follow the signs.

83 O’Toole, Patty On Hwy 62, in the Indian Cove area of Twentynine Palms. 3 miles east of Copper Mountain College, 1 block west of Lear Ave. Look for the BOOKS sign, studio is behind Raven’s Book Shoppe.

P **32 Palmer-Lacy, Jenifer** From Hwy 62, at the signal of Old Woman’s Spring Rd (247), turn south, on to Joshua Lane toward Black Rock Campground. Drive 4 miles. 9252 Joshua Lane is on the right. Proceed to the drive way, then park in the circle.

21 Petersen, Jo Ann From Hwy 62, turn north on Old Woman Springs Rd (Hwy 247). Turn left on Skyline Ranch Rd. Turn left at the second street, Grand Ave. Go to stop sign and turn right on Chipmunk Trail. First or second driveway on the left.

69 Pokras, Steve From Hwy 62, turn south on La Contenta, left on Yucca Trail/Alta Loma, right on Olympic Rd, left on Onaga Tr, right on Wesley Rd to 7880 (large gray shop on right).

2 Poulsen Fisher, Rosa From Hwy 62, in west side of Morongo Valley, turn north on Hess. Turn left at the stop sign, going west on Senilis. At next stop sign, turn right, going north on Juniper. Turn left, going west on Hibiscus. Destination will be 8th house on your right hand side.

Studio Directions CONTINUED

59 Purifoy, Noah From Hwy 62, turn north on to Sunburst, right on Golden, left on Border. Right on Aberdeen, left on Center Ave, and curve to right into Blair Lane (also unpaved road). You will see Noah's Outdoor Desert Art Museum on the left at 63030 Blair Lane.

R

20 Rae, Holly From Hwy 62, turn north on Old Woman Springs. Turn left on Skyline Ranch Road to Canton. On corner of Skyline Ranch Road and Canton St.

13 Rainbow Stew, On Hwy 62, we are in the west end of Old Town Yucca Valley, on the south side of Hwy 62/Twenty-nine Palms Hwy, between Inca and Geronimo.

48 Rieman, Steven L. From Hwy 62, go 8 miles north on Hwy 247 (Old Woman Springs Rd) to Starlight Mesa. Turn right on Starlight Mesa. Go to Cambria (about 2/3 of a mile). Make a right turn. Go a few hundred feet to Vin Rose. Turn left. Go a few hundred feet to Tahoe Ave Turn left. About 1/8 mile on the right you'll see our buildings with metal rooftops.

67 Roberts, Sam From Hwy 62, go south on Park Blvd. for 2 blocks to El Reposo Circle. Turn right and proceed to the second driveway on the left.

55 Rodriguez, Ismael Jessie From Hwy 62, head north on Sunburst, turn right on Golden, turn left on Border, turn left on La Brisa. Go approximately 1/2 mile and turn left on Manana. Studio is on the left.

9 Roleff, Tami From Hwy 62, turn north at Camino del Cielo (at the Travelodge). Turn left on Martinez (first street past the hotel), then turn right on the second street, Cardillo. On corner of Cardillo and San Remo, on the left side. Enter through a gate at the mailbox.

29 Romero, Dan From Hwy 62, turn north on to Pioneertown Road. Continue through Pioneertown and on to Rimrock. At Burns Canyon Rd turn left. At Tumbleweed Tr, turn left and park outside fence on east (left) side of the road.

69 Rosen-Kabe, Lenne From Hwy 62, turn south on La Contenta Rd. Turn left on Yucca Trail/Alta Loma. Turn right on Olympic Rd. Turn left on Onaga Tr. Turn right on Wesley Rd to 7880. House/studio will be on the right.

20 Rothlisberg, Victoria From Hwy 62, turn north on Old Woman Springs to Skyline Ranch Road (at traffic light). Turn left and drive to Canton St. On corner of Skyline Ranch Road and Canton St.

46 Rowell, Bob From Hwy 62, turn north on to Yucca Mesa Rd, turn left on Aberdeen, turn left on El Dorado. Arrive at house appx 3/4 mile.

23 Ryan, Georgia From Hwy 62, turn north on Old Woman Springs Rd to Skyline Ranch Rd/Buena Vista (traffic light). Turn left, then left on Wallaby (the 1st street). Follow Wallaby to Grand, turn right. First driveway on right.

S

45 Schafer, Laurie From Hwy 62, turn north on to Yucca Mesa Road at signal, turn east (right) on Sunway Dr, 2nd house on right.

89 Scott, Aaron From Hwy 62 turn north on to Adobe Rd. Take Adobe Rd to Two Mile Rd, turn right at Circle K. Next block turn left on Palo Verde. The studio is on the corner of Palo Verde and Playa Vista. Fully fenced with chain link, white house with palm trees in the yard.

35 Shaw, Esther From Hwy 62 go south on Avalon (by Walmart), it turns into Palomar at Yucca Tr. Look for 8289. Come down driveway and park.

25 Sinare, Salvatore From Hwy 62 turn north on Old Woman Springs Road (Hwy 247). Go approximately 1.5 miles to Cobalt Road, then turn left. (Alternately, turn left on El Cortez, one street before Cobalt, which is safer. Then turn right on Buena Suerte to Cobalt.) On Cobalt, go

approximately 1.3 miles west to house on left at 56375 Cobalt (cross street is Cholla).

29 Small, Dee From Hwy 62 turn north onto Pioneertown Rd and proceed through Pioneertown to the Pipes Canyon junction. Continue straight ahead on Rimrock Rd, turn left on Burns Canyon Rd, and proceed about 1/2 mile then turn left onto Tumbleweed Trail.

27 Smallwood, Suzen From Hwy 62 turn north on Pioneertown Rd, 0.4 miles past Pappy and Harriet's, left on Roy Rogers, 5th house on right.

85 Smart, Philip From Hwy 62 turn south at Chevron Station, on to Split Rock Avenue. Drive 1 and 3/4 blocks. Site is on left.

82 Smith, Douglas Oliver On Hwy 62, turn south on to Monte Vista Av, right on to frontage road, look for the Roadside Attraction Art Studio at Monte Vista Ave on the south side of Highway.

70 Southard, Richard From Hwy 62 turn south on to Sunny Vista Rd. Continue south on Sunny Vista Rd through 4-way stop at elementary school. Turn right on to La Mirada Tr 0.4 mi, house is on the left.

88 Spangenberg, Mark From Hwy 62 turn south on to Utah Tr, right on to National Park Drive, turn right on Mara. Studio is on the corner of Cottonwood and Mara.

37 Spiller, Barbara From Hwy 62 turn south on to La Contenta (just east of Home Depot). Cross Alta Loma/ Yucca Trail and continue straight on dirt road 1.25 mi to Journey Lane. Turn Left on Journey Lane. Studio is at the second house on the left.

67 Sprague, Heather From Hwy 62 go south on Park Blvd for 2 blocks. Turn right on to El Reposo Circle and proceed to the second driveway on the left.

8 Succulent Surprises, From Hwy 62 turn north on to Rose Eden Dr. Turn left on to Breezeway, right on Little Morongo Rd, left on to Cactus Ln to Quail Crossing Studio.

73 Swenson, Karine From Hwy 62 turn south on to Sunny Vista Rd. When you reach the stop sign at Alta Loma Dr, turn left. Drive one short block and turn left on to Juniper Rd (dirt road). Drive one and a half blocks until you reach 6925 Juniper Rd on the right. Studio is located in the house.

T

16 Taboada, Tobi From Hwy 62 turn south on Joshua Ln. Proceed southbound on Onaga Tr, turn right. Go 1 block and turn right on to Dumosa Ave. Studio is 4 houses down on left.

81 Tanner, Lili From Hwy 62 turn south on to Petersen Rd and follow the dirt road towards the mountains. The last house on the street.

65 Taylor Junction, On Hwy 62 in downtown Joshua Tree. On the north side in the same block as Pie for the People.

84 Thorburn, Gillyan From Hwy 62 turn south on Sherman Road in Twentynine Palms. Entering Sherman Highlands, go to top and turn right on Arenoso Trail. Third house on the left. Park on the street or in the driveway. Studio is in the back, behind the house.

54 Toney, Georgia From Hwy 62 turn north on Sunburst Ave. Turn right on Golden St. Turn left on Border Ave. Turn left on Winters Rd, Continue 1.4 miles to large metal building (Studio Shangri-La) entrance on Winters Rd.

77 Topinka, Vera From Hwy 62, turn south on Sunset Rd. Turn right at Alta Loma, then make an immediate left to stay south on Sunset Rd. Turn left at Skyline Dr, then right on Fleur Dr. House/studio is on the left, after Rincon Rd, at 8385 Fleur Dr.

75 Turner, Jeff From Hwy 62 turn south on to Saddleback Rd. Go 2/10 mile, 2nd house on left.

75 Tyler, Ellie From Hwy 62 turn south on to Saddleback Rd. Go 2/10 mile, 2nd house on left.

V

72 VanVliet, Alita From Hwy 62, turn south on to Sunny Vista Rd. Turn left on Alta Loma Rd (at stop sign). Go two short blocks to Saddleback Rd and turn left. Studio is three driveways down on the left. Follow the signs and look for the red umbrella.

61 Vigallon, Ric & Tim From Hwy 62 turn north on to Sunburst, turn right on to Golden St, 0.9 mi past Border Ave.

22 Vikdal, Nichole From Hwy 62, turn north on to Old Woman Springs Rd/Hwy 247, turn left on to Skyline Ranch Rd at signal, left onto Wallaby, turn right on to Grand. NEW LOCATION!!!

W

18 Wallack, Reuven From Hwy 62 turn north on to Old Woman Springs Rd/Hwy 247. Turn right on to Paxton Road. About a half-mile on the right, there is a white post marking Old Mill Rd (easy to miss, so look carefully). Follow Old Mill Rd through its few curves to the end. The road ends at my driveway.

44 Webster, Patrick From HWY 62 turn north on to Yucca Mesa Rd 1.9 mi, turn left on to Forrest Dr. Destination will be on the right, 0.2 mi.

29 White, Larry From Hwy 62 turn north on to Pioneertown Rd and proceed through Pioneertown to the Pipes Canyon junction. Continue straight ahead on Rimrock Rd, turn left on Burns Canyon Rd, and proceed about 1/2 mile then turn left on Tumbleweed Trail.

86 Whitfield, Doug From Hwy 62 turn south (Denny's near corner) on to Adobe Rd towards mountains, located 3 blocks south on the east side of the street in the orange building directly across the street from Builder's Supply.

68 Willey, Michelle From Hwy 62 turn south on to Sunset Rd. Travel 0.3 mi. Studio will be on your left.

49 Wood, Tami From Hwy 62 turn north on to CA-247 N/Old Woman Springs Road 8 miles. Turn right on Starlight Mesa. Left on Cambria Ave. Go to the last house on the left.

34 Wright, Thomas From Hwy 62 turn south on to Joshua Lane, travel 3.1 miles. Turn left on Emerson Ave, travel 0.2 miles. Arrive at studio on right side, Corner of Emerson and Carlyle, Entrance on Carylyle Dr.

38 Wurden, Barbara From Hwy 62 turn turn south on to La Contenta. Pavement ends, continue on gravel road. Corner of La Contenta and Onaga Trail.

Y

24 Yeager, Ray From Hwy 62, turn north on Hwy 247, left on SkylineRanch Road (at signal), left on Wallaby, Left on Grand, 200 ft on left.

Z

51 Zyduck, Kathy From Hwy 62 turn north on to Old Woman Springs Road/Hwy 247, 12.1 mi, turn right on to Jesse Rd and proceed 1.1 mi to the studio.

D
VOLUNTEER
N
A
E

GET INVOLVED **GALLERY**




Arts Council
Morongo Basin Cultural Arts Council Inc.

Contact Morongo Basin Cultural Arts Council

President: president@mbcac.org
 Membership Director: membership@mbcac.org
 All other inquiries: info@mbcac.org

WWW.MBCAC.ORG

GALLERY 62 IN DOWNTOWN
 JOSHUA TREE FEATURES
 ARTWORK CREATED BY OUR
 VIBRANT COMMUNITY OF
 HI-DESERT ARTISTS

Presented by the Morongo Basin
 Cultural Arts Council

Location:
 61871 Hwy 62
 Joshua Tree, California

Gallery Hours:
 Friday - Sunday 11am-5pm
 and
 2nd Saturday Art Crawls 6-8pm




29 PALMS INN

A proud supporter of the arts for over 85 years



Fine Food & Lodging on the historic Oasis of Mara
 Adobe Bungalows & Wood Frame Cabins, Restaurant & Organic Garden, Set on a Natural Desert Oasis
 73950 Inn Ave • Twentynine Palms • California • 760.367.3505

SAVE THE DATE November 13-15, 2015
 Joshua Tree National Park Art Exposition

29PalmsInn.com

SKY'S THE LIMIT

Observatory & Nature Center
 9697 Utah Trail, Twentynine Palms
 contact@skysthelimit29.org
 www.skysthelimit29.org
 760.367.7222



At the nexus of Art and Science

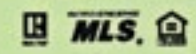
The 15-acre desert campus is always open to the public for the Nature Trail, Meditation Garden, stargazing, and Simi Dabbah's ten magnificent steel sculptures. Docent-led tours offered on Saturdays 10 am - 2 pm. See website for a schedule of Saturday night viewings.



© Steve Caron

Terrapin Trails
 Mark Hughes

Owner/Booker
 BRE license # 00921433



61607 29 Palms Hwy Ste H
 Joshua Tree CA 92252
 rmhjackstraw@gmail.com



office 760-350-5310
 cell 760-680-1494

SUE'S HEALTH FOODS

...and I pray that you may be in good health 3/9/2

Sue Huber
 Proprietor

56840 29 Palms Hwy.
 Yucca Valley, CA 92284

Health Coach, C. N.

760 365-1158
 760 365-1471 FAX

sueshealthfoods.com
 sueshhealthfoods@twbc.com



TAMMA'S MAGIC MERCANTILE

A Journey of Enchantment

Native American
 & Fine Jewelry
 Art & Gifts



Fine Antique
 Furnishings & Decor
 Books & Minerals

Tamma Rae McCombs
 Owner
 Open 10-5 Daily

760-228-0700

55727 29 Palms Hwy
 In Old Town
 Yucca Valley, CA 92284



ACTION PUMPING, INC.

7361 WAMEGO TRAIL, YUCCA VALLEY
 760-365-0861 ACTIONPUMPINGINC.COM
 LICENSE № 436143 C-42 C-36
 SERVING THE DESERT AREA SINCE 1961

Sharon A Davis STOP 5 Both Weekends



Earth House Studios Morongo Valley

earthhousestudios@gmail.com earthhousestudios.com

road is dirt but all cars can make it

Mojave Desert Land Trust
Preserving land to enjoy forever

www.mojavedesertlandtrust.org
P.O. Box 1544 • 60124 29 Palms Hwy • Joshua Tree, CA 92252 • 760-368-5443

*Noah Purifoy
Junk Dada
Los Angeles County
Museum of Art
2015-2016*

Ode to Frank Gehry

*Noah Purifoy Outdoor Desert Art Museum
www.noahpurifoy.com*

PERSONAL Y FIT
Ted & Janet

760-365-5546
1on1 Fitness Training

Morongo Basin Democratic Club
Champions of working families

www.mbdems.com

Please join us: 2nd Saturday of month
Bruce's Coyote Kitchen in the Copper Mountain College
9 AM for Optional Breakfast (\$10.00)
10 AM for Meeting
email: mbdc@roadrunner.com

Las Palmas MEXICAN CUISINE

(760) 367-7164 55792 Twentynine Palms Hwy Yucca Valley, CA 92284
(760) 329-2048 11349 Palm Drive Desert Hot Springs, CA 92240

Visit Studio #32
Open Both Weekends

Hiroko Momii
Jennifer Palmer-Lacy

9252 Joshua Lane, Yucca Valley - Paved Road

PIAZZA ART&FRAME

Specializing in Custom Framing
Hours: Tues - Fri 10-5 / Sat 10-4

Stop by for a Free Quote...
760-365-3396
57243 29 Palms Hwy • Yucca Valley

JOSHUA TREE
chamber of commerce

Your Stop for Art Tours & Local Information
6448 HALLEE RD., JOSHUA TREE, CA
760.366.3723 - WWW.JOSHUATREECHAMBER.ORG

HWY 62 OPEN STUDIO ART TOURS
RANCHO MESA ARTISTS

12 ARTISTS | 5 STUDIOS | 1 NEIGHBORHOOD
BETTER FOOD | BETTER LIVE MUSIC | AND THE BEST ART

OCT. 17 - 18 and OCT. 24 - 25 9 AM - 5 PM

ARTIST:	STUDIO #:	ART SPECIALTY:	WEEK:
Bill Dahl	22	Fine Art Photography	Both
Janelle Farmer	21	Ghost Town Images	Both
Kathi Klopfenstein	22	Sculptural Basketry	Both
Paul Klopfenstein	22	Gourd Art	Both
Julianne Koza	23	Wildlife Photography	Both
Deane Locke	22	Watercolors	Both
JoAnn Petersen	21	Oils	Both
Holly Rae	20	Healing Crystals & Stones	Both
Victoria Rothlisberg	20	Acrylics and Pastels	Both
Georgia Ryan	23	Kiln Glass/Ceramics/Jewelry	Both
Nichole Vikdal	22	Crystalline Glazed Pottery	Both
Ray Yeager	24	Digital Photography	1st

FEATURING...

INFORMATION: REFER TO THE OFFICIAL HWY 62 OPEN STUDIO ART TOURS CATALOG

LOCATION: FOLLOW ART TOUR SIGNS ON HWY 247 TO SKYLINE RANCH ROAD

PIONEER CROSSING ANTIQUES

you will love us

Hwy. 62 & Pioneertown Rd • Yucca Valley • (760) 228-0603

janiscommentz.com
studio by appointment
760.401.1896

Janis Commentz
Painting in the California Tradition

marketing.
design.
web.
photo.
art.

www.MelissaSabol.com

The Joshua Tree National Park Gateway Community Cities
Favorite Real Estate Magazine

desertmoon
pictorial
REAL ESTATE

Monthly Magazine covering Real Estate and Community Services
Featuring our local Animal Shelters and Non-Profit Animal Rescues

Where People and
Companion Animals
Find a Home!

Distributed throughout the Morongo Basin and the
Coachella Valley and in the MCAGCC Guide!
You can also download our magazine at:
www.DesertmoonPictorial.com

Published by Desertmoon Arts Graphic and Design
Bruce and Claudia Hamilton 760-363-6587

**Beth
Abaravich**

Hand Painted Silk

Jim Schooler
Realtore

**INSPIRE
REAL ESTATE**

Direct: 760.218.5124
Fax: 760.557.2050

schoolerx2@gmail.com

56189 29 Palms Hwy
Yucca Valley, CA 92284

MLS License # 10959556

(760) 974-9536

**JOSHUA TREE
EXCURSIONS**

TAKE A JOURNEY THROUGH ART WITH
JOSHUA TREE EXCURSIONS
DURING THE 2015 HWY 62 OPEN STUDIO

Call Today to Book Your Tour or go online to
WWW.JTEXCURSIONS.COM

Shop Closer to Heaven in The Heart of the Hi-Desert!

Fine Arts & Furnishings

Business Graphics & Social Media Campaigns

**ARTFX
&
FURNISHINGS**

Open Until 9:00PM
Every 1st Saturday

YVD YUCCA VALLEY DIGITAL

www.YVDigital.com

55836 Twentynine Palms Hwy - Yucca Valley - CA - 92284

For Your Local Real Estate Needs

Cherie
CHERIE MILLER & ASSOCIATES

55857 29 Palms Highway
Yucca Valley, CA 92284
www.CherieMiller.com
Ph: 760-369-1800

Pioneertown Realty
55857 29 Palms Highway
Yucca Valley, CA 92284
www.PioneertownRealty.com
Ph: 760-369-1800

Morongo Valley Realty
49730 29 Palms Highway
Morongo Valley, CA 92256
www.MorongoValleyRealty.info
Ph: 760-363-6800

Joshua Tree Realty
61325 29 Palms Highway, Suite C,
Joshua Tree, CA 92252
www.JoshuaTreeRealty.info
Ph: 760-366-7600

29 Palms Realty
74017 29 Palms Highway, Suite C,
Twentynine Palms, CA 92277
www.29PalmsRealty.info
Ph: 760-361-2900

Serving the High Desert Neighborhoods of Yucca Valley,
Joshua Tree, Twentynine Palms, Pioneertown, and Morongo Valley
Lic.#01000011

CROSSROADS CAFE

JOSHUA TREE * CALIFORNIA

BREAKFAST • LUNCH • DINNER
BEER AND WINE

OPEN 7 DAYS • 7AM-9PM
61715 29 PALMS HIGHWAY AT PARK BLVD.

Gallery and Gift shop

**ART
COLONY
of Morongo Valley**

11165 Vale Dr. and Covington Park
artcolonyofmorongovalley.com
10:00 am to 4:00 pm Wednesday and Saturday
Original fine art and from local artists
760-363-7937

2 GUYS PIES
 PIZZA, SANDWICHES, APPETIZERS,
 DESERTS AND MORE!
 FRESH INGREDIENTS



LOCATED BEHIND KFC AT
 56969 YUCCA TRAIL Y.V.
 760-418-5075

FAMILY OWNED & OPERATED
 WEBSITE: 2GUYSPIES.COM
 LIKE US ON FACEBOOK



55405 29 Palms HWY, Yucca Valley CA 92284
 www.carlasroute62diner.net 760 365 7888

The Community's Natural Food Store

Joshua Tree HEALTH FOODS *Open 7 Days*

Your Informed Mind, Healthy Body Connection™

Fresh Organic Produce • Refrigerated & Frozen • Bulk & Prepackaged Foods • Herbs • Supplements • Body Care Books • Apparel • Organic Wine & Micro Brews
 Natural & Organic Pet Foods

760.366.7489
 www.JoshuaTreeHealthFoods.com
 61693 Twentynine Palms Hwy Joshua Tree, CA 92252




Holiday Inn Express
 Twentynine Palms

We welcome visitors to
 our arts community.
 Andy Patel, General Manager

72535 Twentynine Palms Hwy.
 Twentynine Palms, CA 92277, USA
 T: 760.361.1000 F: 760.361.9999
 hie29palms@mathsons.com
 www.hiexpress.com/29palms

www.Action29PalmsMurals.com

Action 29 Palms
 The Mural People



HWY 62 open studio
ART TOURS
INFORMATION CENTER

Over 25 Local Artists
 Showing all year long

Oasis is a locally owned, one-stop shop
 and community store: Office & Art Supplies,
 Graphic Design & Printing, Computers & Wifi, Local Art
 & Gifts, Copies & Scans, Fax & Notary, Pack & Ship




56925 YUCCA TRAIL
 YUCCA VALLEY, CA
 (760) 365-1773
 OasisOffice.com

The Hi-Desert Nature Museum features

- Natural History Dioramas
- Kids Corner
- Mini Zoo
- Native American Artifacts
- Skulls and Fossils
- Mineral Collection

The Town of Yucca Valley
 welcomes the HWY 62
 Open Studio
 Art Tours



Hi-Desert Nature Museum

Convincing the Nation
 Includes more than thirty posters from WW II that were used as a primary form of one-way communication before radio and television.

Exhibit on display
 October 1 - December 19, 2015

FREE ADMISSION!
 Thursday - Saturday
 10:00 am - 5:00 pm

Yucca Valley
 Community Center Complex
 57116 Twentynine Palms Highway
 Yucca Valley, CA 92284
 Phone: (760) 369-7212

www.hidesertnaturemuseum.org

A New Experience...
Hawk's Landing
 GOLF CLUB AT BLUE SKIES
 Yucca Valley, California



• Bent Grass Greens
 • Practice Facility
 • Beautiful Landscapes

Enjoy the game of Golf Again!
 Play 6, 12, or 18!
 OPEN DAILY 7 AM

hawkslandinggolf.com

Enjoy Fabulous food & Spirits at our Cafe'
THE ROOST
 Sports Cafe & Bar
 7am-7pm Tues - Thur, 7am-9pm Fri.-Sat.
 7am - 5 pm Sun.
 760.365.0033
 55100 Martinez Trail Yucca Valley, CA

Action 29 Palms
 The Mural People









Chalkfest 29!
 A Total Art Experience For The Whole Family!
November 7-8, 2015
 The Old School House Museum
 6760 National Park Drive
 29 Palms, CA 92277
 (in conjunction with the Weed Show)

Action Council for 29 Palms, Inc.
 P.O. Box 306, 29 Palms, CA 92277
Action29Palms@gmail.com / www.Action29PalmsMurals.com

VICTORIA ROTH LISBERG STUDIO 20 BOTH WEEKENDS
 4929 CANTON STREET, YUCCA VALLEY CA
 DEERFOOT@MSN.COM

ACRYLIC PAINTING
 16x20 To 3'x4'
 PLUS CUSTOMIZED MURALS

Paul Morehead Photography | Studio #62 Both Weekends
 Outdoor Images for Inside Spaces
 760.364.4567 paul@paulmorehead.com






Hwy 62 Open Studio Art Tours
 October 17 & 18 + 24 & 25, 2015
 Large scale images on aluminum | PaulMorehead.com






We've graded our road! Do NOT follow GPS to our studio @ 61026 El Coyote, Joshua Tree
 Please follow the catalog directions. GPS may take you on an impassable ORV trail.

Yucca Mesa Designs

#45
Laurie Schafer
 Textile Art,
 Wearable Art
 and Drawings




#40



#41



Valerie Davis
 Textured Mandalas, Glass Mobiles,
 Selenite Jewelry, Sculpture
 Both Weekends



Ed Keesling
 Ceramics
 Both Weekends



HWY 62 open studio
ART TOURS

WWW.HWY62ART.ORG

